

Coronavirus Job Retention Scheme (CJRS) Statistics: May 2021¹

Key points

- In total, the Midlands Engine area had 566,000 employments furloughed on the 31st March 2021². This was 13.0% of eligible employments for the scheme compared to the UK average of 14.3%.
- When compared to the 28th February 2021, the number of employments furloughed in the Midlands Engine area decreased by 69,000 people (-10.9%). The UK decreased by 11.6% over the same period.
- The latest provisional figures shows that the West Midlands region had 327,300 employments furloughed and the East Midlands region had 268,100 employments furloughed as of 31st March 2021. Compared to the 28th February 2021, the West Midlands region decreased by 10.9% (-40,000 employments furloughed), while the East Midlands decreased by 11.3% (34,200 employments furloughed).
- Accommodation and food services had the highest number of employments furloughed in the Midlands Engine as at 31st March 2021, with 130,430 people. Agriculture, Mining, Energy, Water and waste had the least employments furloughed at 5,330 people.
- Across the UK for most age bands the number of employments on furlough initially increased at the beginning of February 2021 and then decreased slightly in comparison to January 2021 at the end of the month. The 65 and over age band was an exception, where levels of furlough remained broadly consistent throughout February 2021.
- Across the UK for most employer sizes, the number of employments on furlough was broadly similar between January and February and then decreased in March 2021.

Full Briefing:

- This is the eleventh release of Official Statistics on the Coronavirus Job Retention Scheme (CJRS). This release provides analysis of claims for periods up to 31st March 2021. The data used includes claims submitted to HMRC by 14th April 2021.

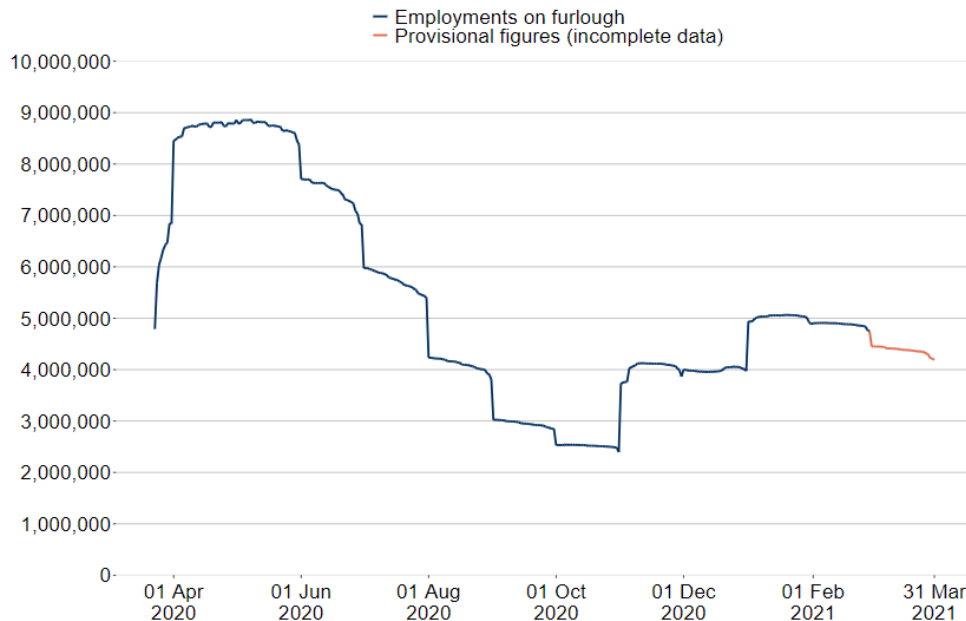
Furloughed Employments Over Time – UK, West Midlands and East Midlands Regions

- For the UK, the number of employments on furlough peaked at 8.9 million on 8th May 2020. This fell to 2.4 million at 31st October and then rose again to 4.9 million employments on furlough at 31st January 2021. The latest provisional figures show there has been a decrease in levels of furlough between February and March 2021 with 4.2 million on furlough at 31st March 2021, down from 4.7 million on 28th February.

¹ Source: HM Revenue & Customs (HMRC), Coronavirus Job Retention Scheme statistics: May 2021. Please note, the data for March 2021 is not yet fully complete as while claims relating to March 2021 should have been filed by 14th April 2021, employers could file claims later with the agreement of HMRC if they had a reasonable excuse. Claims for March 2021 can also be amended until 28th April 2021. Together, these factors are likely to have a small effect on the statistics.

² 1,733,700 individuals in the Midlands Engine area have been furloughed at some point, 566,000 remain furloughed as of 31st March 2021.

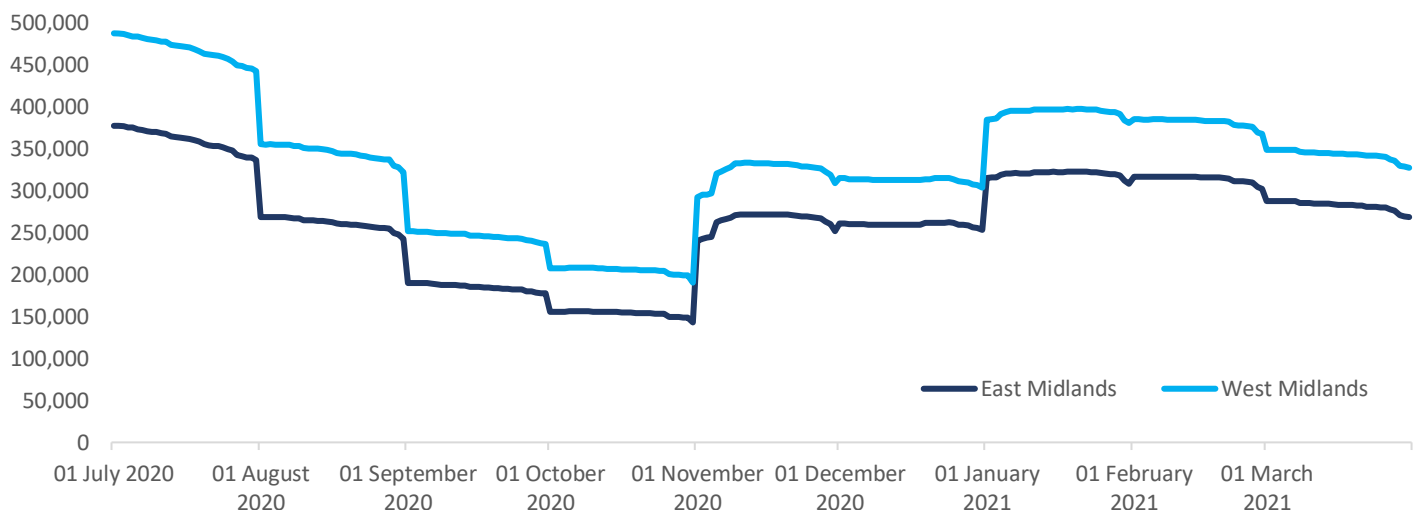
The following chart shows the total number of employments furloughed in the UK between 23rd March 2020 to 31st March 2021:



Source: HMRC CJRS data

- The latest provisional figures shows that the West Midlands region had 327,300 employments furloughed and the East Midlands region had 268,100 employments furloughed as of 31st March 2021.
- Compared to the 28th February 2021, the West Midlands region decreased by 10.9% (-40,000 employments furloughed), while the East Midlands decreased by 11.3% (34,200 employments furloughed), and the UK decreased by 11.6% over the same period.

The following chart shows for the East Midlands and West Midlands Regions the number of employments furloughed between 1st July 2020 to 31st March 2021:

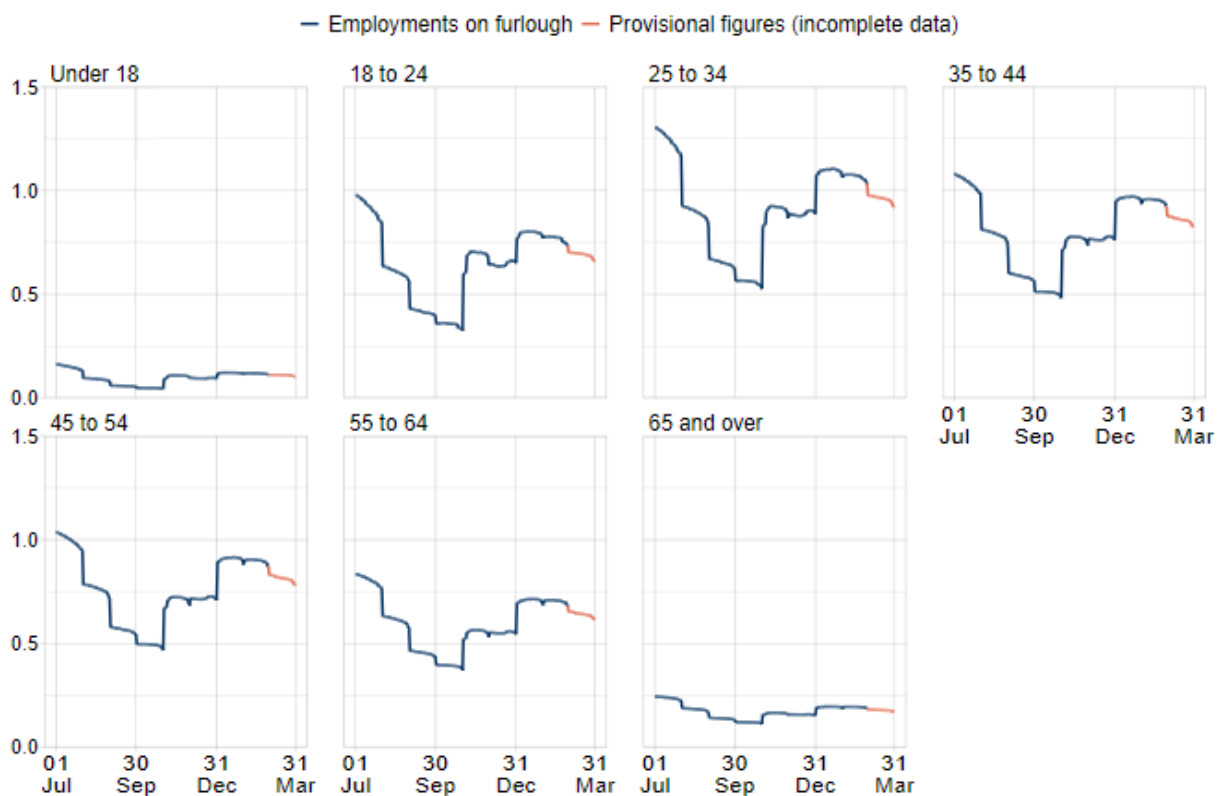


- Of the 327,300 employments furloughed in the West Midlands region of 31st March 2021, 227,900 were fully furloughed and 99,400 were partially furloughed. For the East Midlands, of the 268,100 employments furloughed 183,400 are fully furloughed and 84,700 are partially furloughed.

Employments Furloughed Over Time by Age - UK

- Across most age bands the number of employments on furlough initially increased at the beginning of February 2021 and then decreased slightly in comparison to January 2021 at the end of the month. The 65 and over age band was an exception, where levels of furlough remained broadly consistent throughout February 2021.
- Provisional figures show the number of employments on furlough in March 2021 decreased across all age bands. For employments where the employee was aged 25 to 34, the number of employments on furlough was 1.03 million at 28th February. Provisional figures show that this figure dropped to 920,000 at 31st March 2021.
- The number of employments on furlough with employees in the 18 to 24 age band was 733,700 at 28th February. At 31st March 2021, provisional figures show that 659,000 employments were on furlough in the 18-24 age band.
- Where the employee was 65 or over, the number of employments on furlough was 186,300 at 28th February. Provisional estimates show that the number of employments on furlough decreased in March to 170,400 at 31st March 2021.

The following chart shows the number employments furloughed (in millions) for the UK by the age of the employee per day between the 1st July 2020 to 31st March 2021:



Source: HMRC CJRS and PAYE Real Time Information data

Furloughing by Employer Size – UK

- Across most employer sizes, the number of employments on furlough was broadly similar between January and February and then decreased in March 2021. At 28th February, 1.55 million employments were put on furlough by large employers with 250 or more employees. Provisional

estimates show that the number of employments on furlough decreased to 1.31 million at 31st March 2021.

- Employers with 20 to 49 employments had 636,800 employments on furlough at 28th February. Provisional estimates show that the number of employments on furlough decreased through March to 565,400 at 31st March 2021.
- Employers with one employment had 194,100 employments on furlough at 28th February. Provisional figures show that this decreased in March to 181,600 employments on furlough at 31st March 2021.

Employments Furloughed by Gender – Midlands Engine

- In total, the latest provisional figures show that Midlands Engine area had 566,000 employments furloughed on the 31st March 2021. This was 13.0% of eligible employments for the scheme compared to the UK average of 14.3%.
- When compared to the 28th February 2021, the number of employments furloughed in the Midlands Engine area decreased by 69,000 people (-10.9%). The UK decreased by 11.6% over the same period.
- As of the 31st March 2021, the take up rate of males and females were 13.8% and 12.1% compared to 14.4% and 13.4% for the UK respectively.
- Overall, the local authorities with the highest percentage of workers furloughed were Derbyshire Dales (16.7%), East Lindsey (16.5%) and Stratford-on-Avon (15.8%) as of 31st March 2021.
- The local authorities with the highest percentage of males furloughed was East Lindsey at 15.4%, followed by Birmingham (14.9%), and Leicester (14.4%).
- The local authorities with the highest percentage of female employments furloughed was Derbyshire Dales at 19.7%, followed by East Lindsey (17.6%) and Stratford-on-Avon (17.5%).

Further details by local authority within the Midlands Engine area can be seen in a table in the appendix.

Sectors – Midlands Engine

- Accommodation and food services had the highest number of employments furloughed in the Midlands Engine as at 31st March 2021, with 130,430 people. Agriculture, Mining, Energy, Water and waste had the least employments furloughed at 5,330 people.
- All sectors saw a decrease in employments furloughed between 28th February 2021 to 31st March 2021, with the highest decrease in wholesale and retail; repair of motor vehicles by 16,480 (to 116,920 furloughed) down to of public administration and defence; social security, households & other by 880 (to 7,760 furloughed).

The following table shows the total employments furloughed by sector for the Midlands Engine and the change since the previous month as at 31st March 2021:

	Employments Furloughed 28th February 2021	Employments Furloughed 31st March 2021	Change
Agriculture, forestry and fishing, Mining and quarrying, Energy production and supply & Water supply, sewerage and waste	6,250	5,330	-920
Manufacturing	64,240	56,430	-7,810
Construction	29,860	25,390	-4,470
Wholesale and retail; repair of motor vehicles	133,400	116,920	-16,480
Transportation and storage	23,880	21,380	-2,500
Accommodation and food services	136,860	130,430	-6,430
Information and communication, Financial and insurance & Real estate	23,760	21,780	-1,980
Professional and scientific and technical	35,940	31,980	-3,960
Administrative and support services	49,120	41,600	-7,520
Education	26,570	18,940	-7,630
Health and social work	25,540	21,500	-4,040
Arts, entertainment and recreation	39,800	38,160	-1,640
Other service activities	31,680	28,800	-2,880
Public administration and defence; social security, Households & Other	8,640	7,760	-880
Total	635,000	566,000	-69,000

Appendix – Employment Furloughed by Gender in the Midlands Engine Area on 31st March 2021:

	Female			Male			Total		
	Female employments furloughed	Female eligible employments	Female take up-rate	Male employments furloughed	Male eligible employments	Male take up-rate	Total employments furloughed	Total eligible employments	Total take up-rate
Amber Valley	27,800	3,900	14.0%	27,700	3,000	10.9%	7,800	6,900	12.4%
Ashfield	27,900	3,500	12.6%	27,600	3,200	11.6%	7,500	6,700	12.1%
Bassetlaw	25,800	3,500	13.4%	26,000	2,800	10.8%	7,100	6,300	12.1%
Birmingham	205,900	29,500	14.3%	217,300	32,500	14.9%	68,600	62,000	14.7%
Blaby	24,200	3,300	13.8%	22,800	2,800	12.4%	6,900	6,200	13.2%
Bolsover	18,100	2,200	11.9%	17,900	1,800	10.3%	4,600	4,000	11.1%
Boston	16,400	1,600	9.8%	17,200	1,400	8.0%	3,500	3,000	8.9%
Bromsgrove	22,300	3,100	13.8%	21,000	2,700	12.8%	6,400	5,800	13.3%
Broxtowe	24,100	2,900	11.8%	23,800	2,700	11.2%	6,400	5,500	11.5%
Cannock Chase	22,600	3,300	14.5%	22,400	2,500	11.3%	6,700	5,800	12.9%
Charnwood	39,300	5,600	14.2%	38,900	4,800	12.4%	12,000	10,400	13.3%
Chesterfield	22,900	2,800	12.4%	22,300	2,600	11.8%	5,900	5,500	12.1%
Coventry	72,800	9,000	12.4%	76,200	8,800	11.6%	20,000	17,800	12.0%
Derby UA	54,900	6,800	12.4%	57,500	6,500	11.3%	15,100	13,300	11.8%
Derbyshire Dales	14,900	2,900	19.7%	14,200	1,900	13.5%	5,300	4,900	16.7%
Dudley	67,400	9,100	13.5%	66,500	8,900	13.3%	19,900	18,000	13.4%
East Lindsey	24,800	4,400	17.6%	24,900	3,800	15.4%	9,000	8,200	16.5%
East Staffordshire	27,500	3,800	13.9%	29,000	3,300	11.2%	8,200	7,100	12.5%
Erewash	26,100	3,600	13.6%	25,600	3,000	11.6%	7,700	6,500	12.6%
Gedling	26,900	3,500	13.0%	24,900	3,100	12.4%	7,500	6,600	12.7%
Harborough	21,500	3,300	15.5%	20,700	2,500	11.9%	6,500	5,800	13.7%
Herefordshire, County of (UA)	39,800	5,800	14.5%	37,600	4,200	11.1%	11,600	9,900	12.8%
High Peak	21,200	3,200	15.0%	19,900	2,600	13.2%	6,300	5,800	14.1%
Hinckley and Bosworth	25,800	3,600	13.9%	25,700	3,000	11.7%	7,300	6,600	12.8%
Leicester UA	72,600	10,700	14.8%	81,100	11,700	14.4%	23,700	22,400	14.6%
Lichfield	23,000	3,500	15.2%	22,700	2,900	12.7%	7,200	6,400	14.0%
Lincoln	21,300	2,700	12.9%	21,800	2,400	10.8%	5,800	5,100	11.8%
Malvern Hills	15,700	2,400	15.3%	14,900	1,900	12.5%	4,900	4,300	14.0%
Mansfield	24,800	3,400	13.8%	24,600	2,900	11.9%	7,200	6,400	12.9%
Melton	11,800	1,800	15.2%	11,500	1,300	11.5%	3,400	3,100	13.4%
Newark and Sherwood	26,600	4,100	15.3%	26,400	3,000	11.5%	8,100	7,100	13.4%
Newcastle-under-Lyme	26,800	3,500	13.0%	26,100	3,000	11.3%	7,400	6,400	12.2%
North East Derbyshire	22,100	3,000	13.7%	21,000	2,400	11.5%	6,100	5,400	12.6%
North East Lincolnshire UA	33,100	4,500	13.5%	34,400	3,400	10.0%	8,600	7,900	11.7%
North Kesteven	25,500	2,900	11.3%	25,200	2,200	8.9%	5,900	5,100	10.1%
North Lincolnshire UA	35,100	4,400	12.6%	37,700	3,700	9.7%	9,100	8,100	11.1%
North Warwickshire	15,000	2,100	14.1%	14,600	1,700	11.5%	4,300	3,800	12.8%
North West Leicestershire	23,700	3,200	13.6%	24,100	2,400	10.0%	6,400	5,600	11.8%
Nottingham UA	62,300	8,200	13.2%	62,600	8,100	13.0%	18,300	16,400	13.1%
Nuneaton and Bedworth	30,300	3,700	12.2%	30,500	3,300	10.9%	7,600	7,000	11.5%
Oadby and Wigston	12,600	1,900	14.7%	12,100	1,600	13.4%	3,800	3,500	14.1%
Redditch	20,500	2,700	13.3%	20,100	2,200	11.0%	5,800	5,000	12.2%
Rugby	26,400	3,200	12.0%	28,100	2,700	9.5%	6,600	5,800	10.7%
Rushcliffe	26,000	3,100	12.1%	24,900	2,800	11.1%	6,600	5,900	11.6%
Rutland UA	7,800	1,300	16.1%	7,800	900	11.6%	2,600	2,200	13.8%
Sandwell	67,300	9,300	13.8%	68,600	9,500	13.8%	20,800	18,700	13.8%
Shropshire UA	66,600	10,200	15.3%	63,200	7,600	12.0%	20,300	17,800	13.7%
Solihull	47,100	7,100	15.2%	46,500	5,800	12.4%	14,400	12,900	13.8%
South Derbyshire	25,000	3,300	13.3%	25,100	2,600	10.5%	6,900	6,000	11.9%
South Holland	20,200	2,200	10.9%	21,200	1,700	8.0%	4,400	3,900	9.4%
South Kesteven	31,600	4,800	15.0%	31,200	3,500	11.3%	9,500	8,300	13.2%
South Staffordshire	23,900	3,500	14.7%	22,700	2,800	12.3%	7,200	6,300	13.5%
Stafford	30,100	4,000	13.2%	30,200	3,100	10.3%	7,900	7,100	11.7%
Staffordshire Moorlands	20,800	3,100	15.1%	19,900	2,300	11.5%	6,000	5,400	13.3%
Stoke-on-Trent UA	52,800	6,700	12.7%	55,200	6,300	11.5%	14,900	13,100	12.1%
Stratford-on-Avon	29,500	5,200	17.5%	29,000	4,100	14.1%	10,200	9,200	15.8%
Tamworth	18,200	2,800	15.3%	18,600	2,100	11.3%	5,700	4,900	13.3%
Telford and Wrekin UA	39,500	4,900	12.3%	40,400	4,200	10.4%	10,200	9,100	11.4%
Walsall	55,900	8,000	14.3%	57,200	7,700	13.5%	17,300	15,700	13.9%
Warwick	32,800	4,600	14.1%	34,100	3,900	11.5%	9,500	8,500	12.8%

	Female			Male			Total		
	Female employments furloughed	Female eligible employments	Female take up-rate	Male employments furloughed	Male eligible employments	Male take up-rate	Total employments furloughed	Total eligible employments	Total take up-rate
West Lindsey	19,000	2,400	12.5%	19,100	1,900	9.8%	4,900	4,200	11.1%
Wolverhampton	54,700	6,700	12.2%	54,600	6,700	12.2%	15,000	13,300	12.2%
Worcester	25,100	3,400	13.4%	24,400	3,000	12.4%	7,300	6,400	12.9%
Wychavon	29,100	4,400	15.2%	28,200	3,400	12.1%	8,800	7,800	13.7%
Wyre Forest	21,300	3,100	14.6%	20,400	2,800	13.6%	6,600	5,900	14.1%
East Midlands	143,900	1,060,700	13.6%	124,200	1,063,200	11.7%	268,100	2,123,900	12.6%
West Midlands	171,600	1,230,800	13.9%	155,700	1,240,300	12.6%	327,300	2,471,100	13.2%
Midlands Engine	2,174,400	300,200	13.8%	2,189,600	265,900	12.1%	635,000	566,000	13.0%
United Kingdom	14,734,000	2,124,500	14.4%	14,534,100	1,945,600	13.4%	29,268,000	4,193,900	14.3%