

## Claimant Count- January 2021 Release<sup>1</sup>

### Key Points:

- There were 411,660 claimants aged 16 years and over in the Midlands Engine area in December 2020, this is a decrease of 850 claimants since November 2020. This equates to a decrease of 0.2% for the Midlands Engine area while the UK increased by 0.2%. Since March 2020 (221,540 claimants), the number of claimants aged 16 years and over in the Midlands Engine area has increased by 190,120 (+85.8% compared to +105.8% for the UK).
- Overall, for the Midlands Engine area the number of claimants as percentage of residents aged 16 years and over was 4.9% compared to 4.8% for the UK In December 2020.
- There were 82,980 youth claimants (16-24 years old) in the Midlands Engine area in December 2020– a decrease of 940 claimants since November 2020. This equates to a decrease of 1.1% with the UK decreasing by 0.6%. Since March 2020 (44,195 claimants), the number of youth claimants has increased by 38,785 (+87.8% compared to +109.0% for the UK).
- Overall, for the Midlands Engine area the number of youth claimants as percentage of residents aged 16-24 years old was 7.2% compared to 7.1% for the UK in December 2020.

### In Detail:

#### Claimants Aged 16 Years and Over

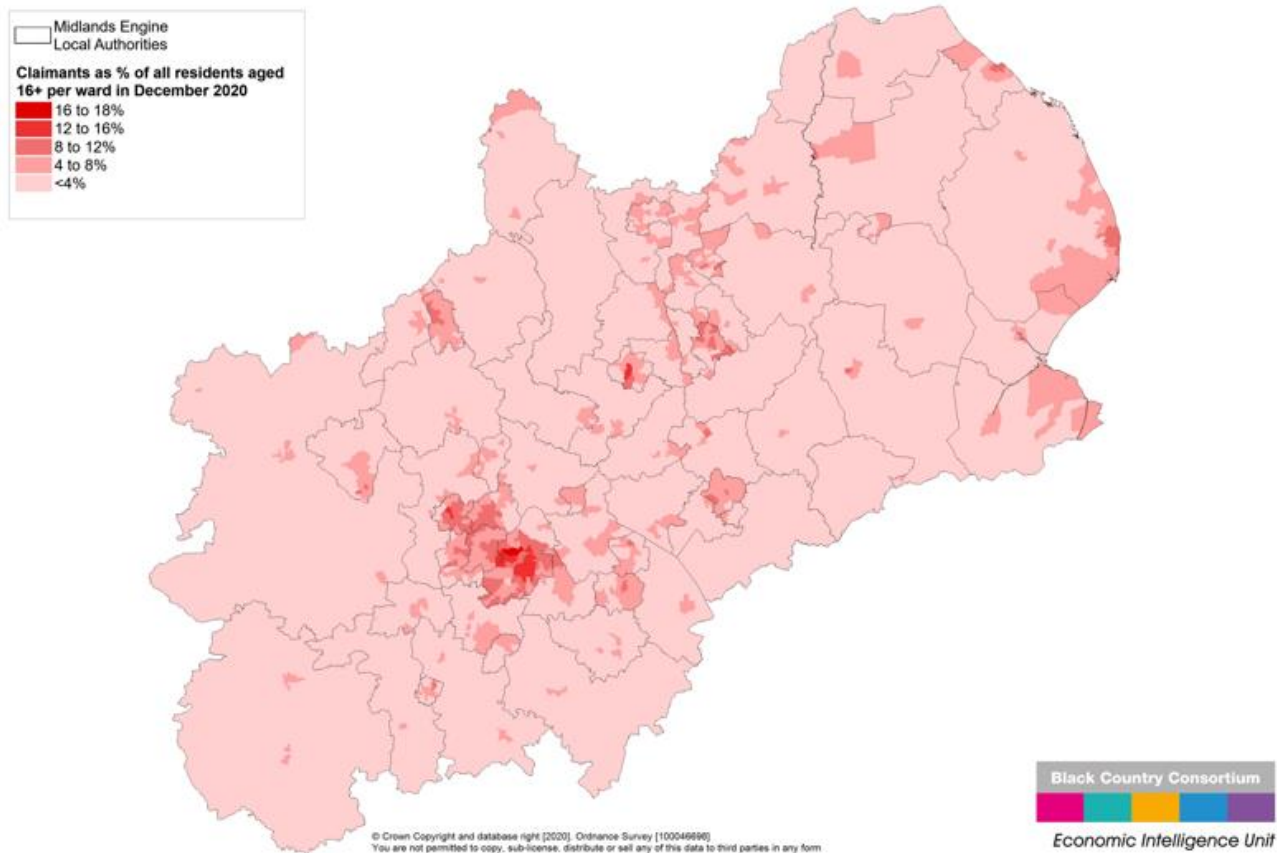
- There were 411,660 claimants aged 16 years and over in the Midlands Engine area in December 2020, this is a decrease of 850 claimants since November 2020. This equates to a decrease of 0.2% for the Midlands Engine area while the UK increased by 0.2%.
- Since March 2020 (221,540 claimants), the number of claimants aged 16 years and over in the Midlands Engine area has increased by 190,120 (+85.8% compared to +105.8% for the UK).
- When compared to the same month in the previous year (December 2019, 209,360 claimants), the number of claimants has increased by 202,300 (+96.6% compared to 117.0% for UK).
- Overall, for the Midlands Engine area the number of claimants as percentage of residents aged 16 years and over was 2.7% in March 2020 compared to 2.4% for the UK. This has increased to 4.9% for the Midlands Engine and to 4.8% for the UK in December 2020.

#### Ward Analysis – Claimants Aged 16 Years and Over

- Out of the 1,511 wards within the Midlands Engine, 409 were at or above the UK average of 4.8% for the number of claimants as a percentage of the population aged 16 years and over in December 2020.
- The top three wards for the number of claimants as a percentage of the population were based in Birmingham, with Lozells the highest with 17.9%. This is followed by Handsworth at 17.6% and then Birchfield at 16.9%.

<sup>1</sup> ONS/Department for Work and Pensions: Claimant Count – released January 2021

The following map shows claimants as a percentage of residents aged 16 years and over in December 2020 across the Midlands Engine:



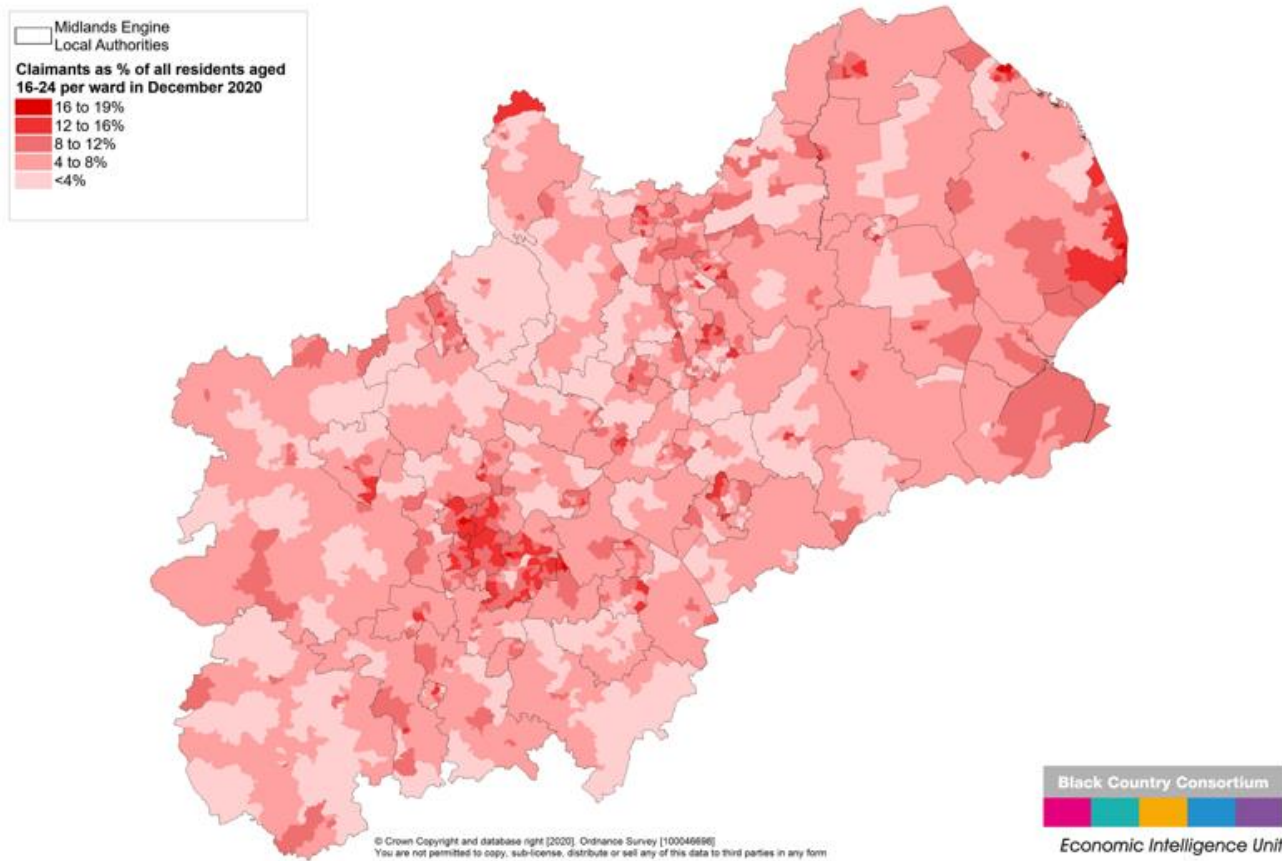
### Youth Claimant (Aged 16 – 24 Years Old)

- There were 82,980 youth claimants (16-24 years old) in the Midlands Engine area in December 2020 – a decrease of 940 claimants since November 2020. This equates to a decrease of 1.1% with the UK decreasing by 0.6%.
- Since March 2020 (44,195 claimants), the number of youth claimants has increased by 38,785 (+87.8% compared to +109.0% for the UK).
- When compared to the same month in the previous year (December 2019, 41,680 claimants), the number of claimants has increased by 41,300 (+99.1% compared to +121.6% for UK).
- Overall, for the Midlands Engine area the number of youth claimants as percentage of residents aged 16-24 years old was 3.8% in March 2020 compared to 3.4% for the UK. This has increased to 7.2% for the Midlands Engine and to 7.1% for the UK in December.

### Ward Analysis – Youth Claimants

- Out of the 1,511 wards within the Midlands Engine, 619 were at or above the UK average of 7.1% for the number of claimants as a percentage of the population aged between 16 – 24 years old in December 2020.
- The top wards for the number of claimants as a percentage of the population was in Winthorpe (East Lindsey) at 18.5%. This is followed by East Park (Wolverhampton) at 18.1% and then Chelmsley Wood (Solihull) at 17.5%.

The following map shows claimants as a percentage of residents aged 16-24 years old in December 2020:



### Alternative Claimant Count<sup>2</sup>

- An experimental quarterly alternative claimant count was released that covers the yearly month of November 2015 to November 2020. These statistics measure the number of people claiming unemployment related benefits by modelling what the count would have been if Universal Credit had been fully rolled out since 2013 (when Universal Credit began).
- Trends over time for local areas can be considered using the Claimant Count prior to 2013, and the Alternative Claimant Count from 2013. However, the figures cannot be directly compared as they are defined differently.

### All Ages

- The alternative claimant count data shows an increase between November 2019 to November 2020 for the Midlands Engine area by 91.2% (+201,500 people), which is below the UK increase of 109.6%

### All Ages Alternative Claimant Count, November 2015 – November 2020

	November 2015	November 2016	November 2017	November 2018	November 2019	November 2020	Change since '19	% Change
Midlands Engine	214,480	212,351	208,662	210,159	220,907	422,407	201,500	91.2%
UK	1,323,730	1,276,906	1,233,925	1,232,029	1,271,926	2,665,353	1,393,427	109.6%

<sup>2</sup> Source: Department for Work and Pensions, Alternative claimant statistics, January 2021

## 16 – 24-years old

- The alternative claimant count data shows for those aged 16 – 24 years old an increase between November 2019 to November 2020 for the Midlands Engine by 112.1% (+43,133 people), which is below the UK increase of 137.1%

### *16- 24 years old Alternative Claimant Count, November 2015 – November 2020*

	November 2015	November 2016	November 2017	November 2018	November 2019	November 2020	Change since '19	% Change
Midlands Engine	36,527	36,056	33,335	33,491	38,485	81,618	43,133	112.1%
UK	217,836	205,424	187,236	187,800	209,316	496,319	287,003	137.1%