

MIDLANDS MATTERS - ISSUE 21



midlandsengine.org

MIDLANDS ENGINE LATEST

Midlands Engine partnership calls for greater investment in regional connectivity

Call follows first Midlands Engine Digital Conference held 18 January with aim of levelling up regional digital connectivity.

[READ MORE](#)



Young People's Green Growth Assembly

Join us on 11 March at East Midlands Conference centre - when we give young people from across our region the chance to share their thoughts on how, together, we can shape a greener, cleaner and more prosperous future for our region.

[SIGN UP](#)



Mental Health & Productivity Pilot seeks views on long-term sickness absence

Midlands HR professionals encouraged to share views on how COVID-19 has impacted long-term sick leave to influence future policy.

[READ MORE](#)



MORE NEWS FROM THE MIDLANDS

Professor Sir Jonathan Van-Tam rejoins University of Nottingham

Deputy Chief Medical Officer to begin Pro-Vice-Chancellor for Medicine & Health Sciences role on 1 May 2022, succeeding Professor John Atherton.

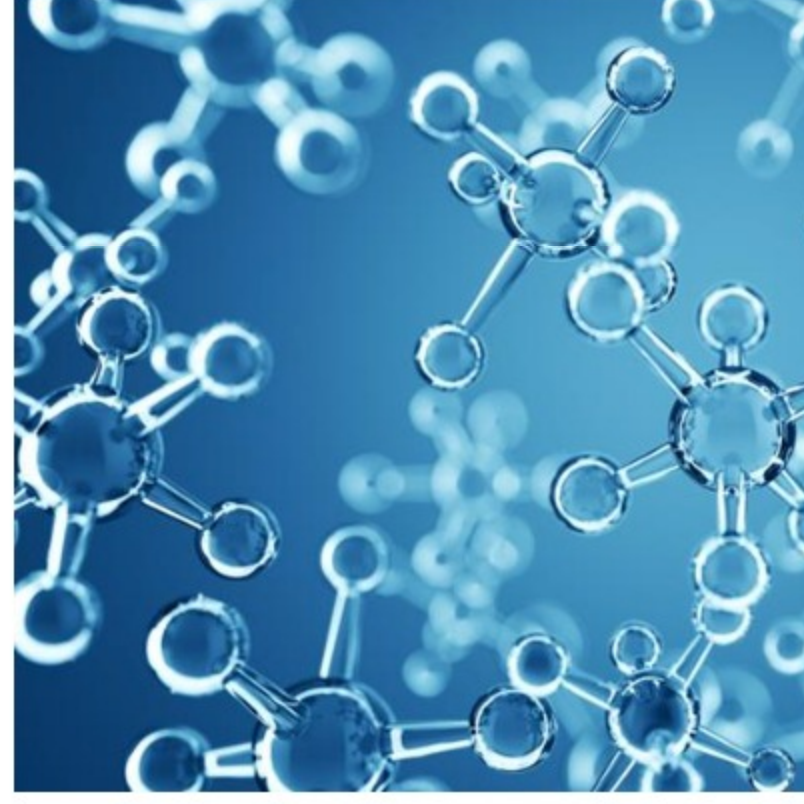
[READ MORE](#)



'Hydrex' puts Midlands at forefront of hydrogen innovation

Keele, Aston, Birmingham, Cranfield, Loughborough, Nottingham and Warwick universities all involved.

[READ MORE](#)



Sir Chris Haworth appointed Chair of East Midlands Development Corporation

Former head of commercial property consultancy Carter Jonas will lead one of Midlands' biggest large-scale development opportunities.

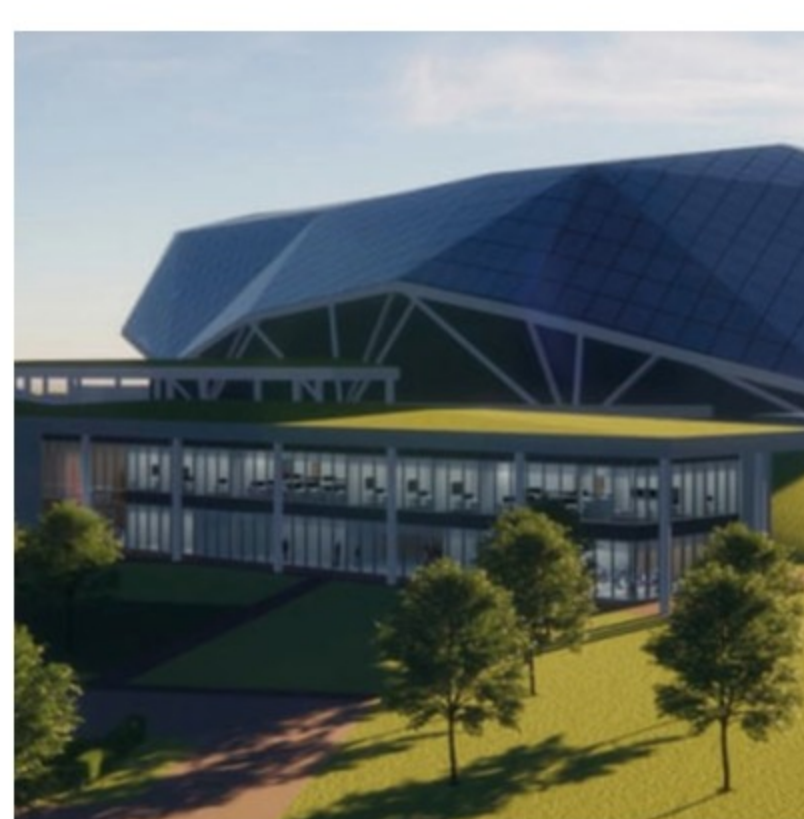
[READ MORE](#)



Small Modular Reactors receive £85m boost

Qatar Investment Authority signs deal with Rolls-Royce to take 10% stake in new business.

[READ MORE](#)



Coventry to become UK's first all-electric bus city

National Express commits to rolling out 130 zero-emission buses in the city from next year.

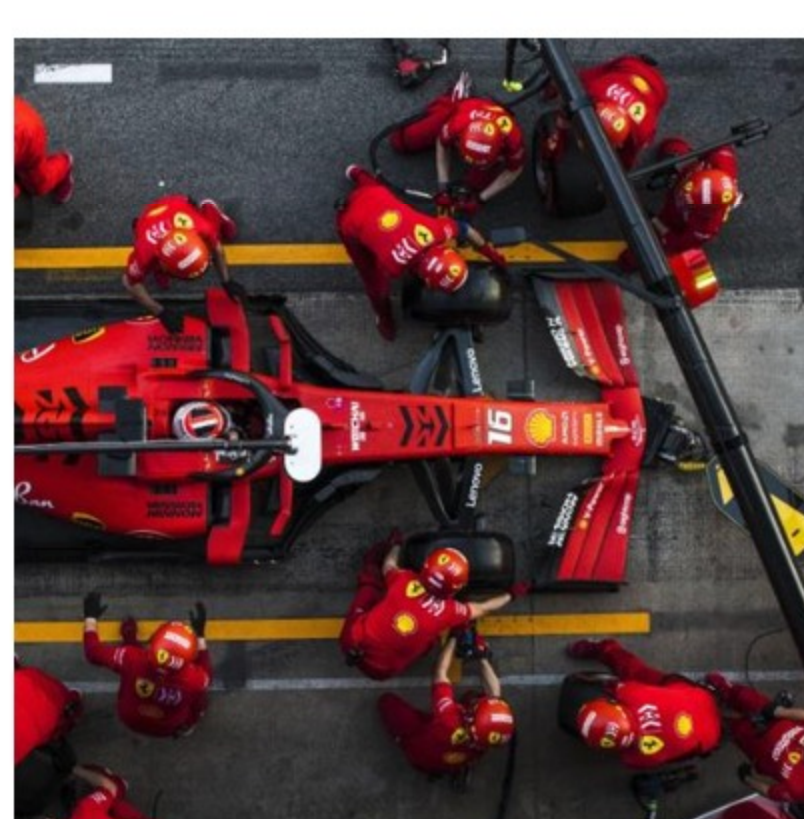
[READ MORE](#)



5SPRING to work with Formula 1

UK's first 5G commercial application accelerator partners with premier motorsport to explore 5G solutions for events industry.

[READ MORE](#)



Transforming Wolverhampton city centre

City of Wolverhampton Council's multi-million-pound project gathers pace.

[READ MORE](#)



[TO SUBSCRIBE TO OUR NEWSLETTER CLICK HERE](#)



[TO CONTRIBUTE TO OUR NEWSLETTER CLICK HERE](#)



[FOLLOW US ON SOCIAL MEDIA](#)

Our mailing address is: Midlands Engine, Trent Bridge House, Fox Road, West Bridgford, Nottingham, NG2 6BJ

DISCLAIMER OF LIABILITY Every effort is made to provide accurate and complete information in the Midlands Engine newsletter. However, Midlands Engine cannot guarantee that there will be no errors and makes no claims, promises or guarantees about the accuracy, completeness of the contents of its newsletter and expressly disclaims liability for errors and omissions in the contents of this newsletter.

Copyright ©2022 The Midlands Engine, All rights reserved.

You are receiving this email because

- 1) You're a friend of Midlands Engine
- 2) You subscribed via Midlands Engine

[Preferences](#) | [Unsubscribe](#)