

No images? [Click here](#)

MIDLANDS MATTERS - ISSUE 26

**MIDLANDS
ENGINE**
**MIDLANDS
MATTERS**

midlandsengine.org



MIDLANDS ENGINE LATEST

Spotlight on business resilience for 28th Regional Economic Impact Monitor

Latest Midlands Engine Observatory report explores regional response to inflation and labour shortages, plus encouraging levels of FDI.

[READ MORE](#)

**MIDLANDS
ENGINE**

Observatory

**MIDLANDS ENGINE
REGIONAL ECONOMIC IMPACT IV**

EDITION 28: JUNE 2022

Regional expertise in advanced ceramics presents huge growth opportunity

In-depth report from Midlands Industrial Ceramics Group details how Midlands leads the way in critical industry, supporting sectors from healthcare and electricals to space and security.

[READ MORE](#)



MICG Midlands Industrial Ceramics Group

Midlands councils in £1million electric vehicle charging point bid

Five local authorities plus Midlands Engine's transport arm, Midlands Connect, hope to build 322 standard and 27 rapid electric vehicle (EV) charging stations targeted at areas without off-street parking.

[READ MORE](#)



Renewed focus on importance of Midlands' visitor economy

Midlands Engine Observatory factsheet sets out potential for key sector growth post-Covid.

[READ MORE](#)



Challenges and opportunities for towns and cities regeneration

Detailing disparities between rural and urban areas and legacy of Covid-19, Midlands Engine Observatory factsheet makes case for greater investment to meet needs of regional businesses and communities.



[READ MORE](#)

MORE NEWS FROM THE MIDLANDS

Birmingham Commonwealth Games to provide massive tourism boost

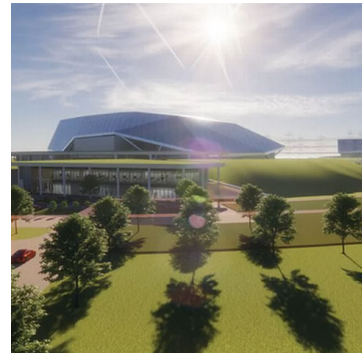
Business and Tourism Programme (BATP) aims to leverage Birmingham 2022 Commonwealth Games to embed positive perceptions of West Midlands into international imagination.



[READ MORE](#)

Lincolnshire site shortlisted for Rolls-Royce's £200m 'mini' nuclear reactor factory

A new industrial site in Grimsby has potential to place region at forefront of new nuclear technology.



[READ MORE](#)

£18m Marches investment creates over 80 new jobs

Three regional companies are to expand with help from Marches LEP's Key Account Management (KAM) programme.



[READ MORE](#)

Stafford's iconic Shire Hall given new lease of life

£2m renovation turn historic building into business enterprise centre in bid to revitalise town centre.

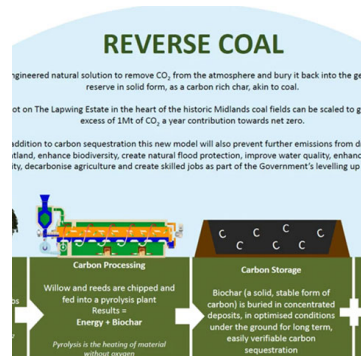
[READ MORE](#)



Innovative 'reverse coal' project launched in Lincolnshire

Regional clean energy firm Lapwing Energy announce pioneering CO2 removal solution with £54 million government backing.

[READ MORE](#)



Cutting edge golf technology centre opens in Loughborough University Science Park

The PING Performance Research Centre aims to advance innovation in the world of golf.

[READ MORE](#)



[TO SUBSCRIBE TO OUR NEWSLETTER CLICK HERE](#)



[TO CONTRIBUTE TO OUR NEWSLETTER CLICK HERE](#)



[FOLLOW US ON SOCIAL MEDIA](#)

Our mailing address is: Midlands Engine, Trent Bridge House, Fox Road, West Bridgford, Nottingham, NG2 6BJ

DISCLAIMER OF LIABILITY Every effort is made to provide accurate and complete information in the Midlands Engine newsletter. However, Midlands Engine cannot guarantee that there will be no errors and makes no claims, promises or guarantees about the accuracy, completeness of the contents of its newsletter and expressly disclaims liability for errors and omissions in the contents of this newsletter.

