

Midlands Engine Claimant Count – August 2023 Release¹

Key Points:

- There were 276,755 claimants aged 16 years and over in the Midlands Engine area in July 2023, an increase of 4,670 claimants since the previous month. This equates to an increase of 1.7% for the Midlands Engine area, the UK increased by 1.8%. Since March 2020, the number of claimants in the Midlands Engine area has increased by 55,215 (+24.9% compared to +23.3% for the UK).
- Overall, for the Midlands Engine area the number of claimants as percentage of residents aged 16 years and over was 3.3% compared to 2.9% for the UK in July 2023.
- There were 51,645 youth claimants (16–24 years old) in the Midlands Engine area in July 2023, an increase of 1,155 youth claimants since the previous month. This equates to an increase of 2.3% with the UK increasing by 2.2%. Since March 2020, the number of youth claimants has increased by 7,450 (+16.9% compared to +12.4% for the UK).
- Overall, for the Midlands Engine area the number of youth claimants as percentage of residents aged 16 – 24 years old was 4.6% compared to 3.8% for the UK in July 2023.

In Detail:

Claimants Aged 16 Years and Over

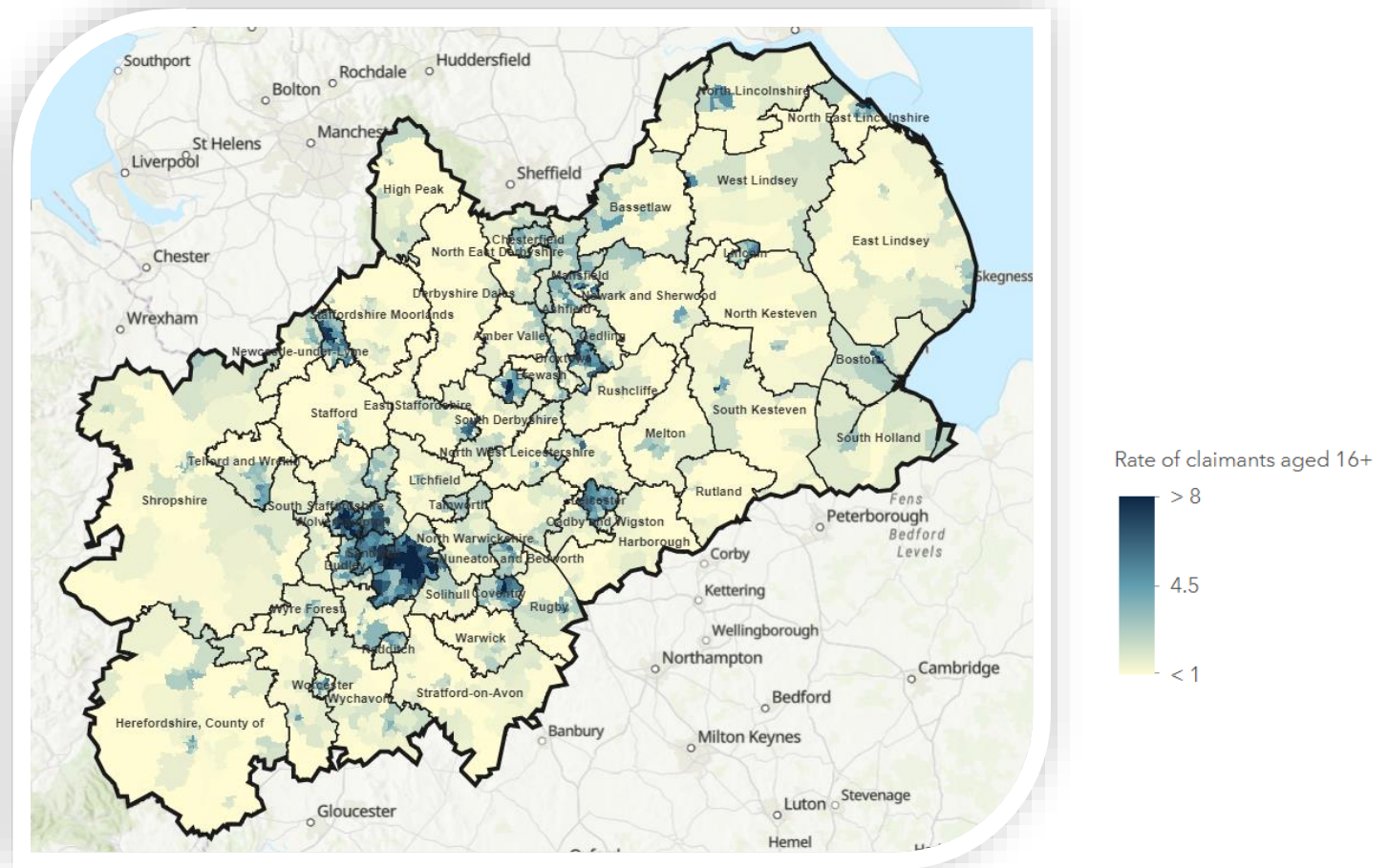
- There were 276,755 claimants aged 16 years and over in the Midlands Engine area in July 2023, an increase of 4,670 claimants since the previous month. This equates to an increase of 1.7% for the Midlands Engine area, the UK increased by 1.8%.
- The latest monthly change shows across the Midlands Engine geography that 47 local authorities increased, 15 decreased and 3 remained at the same level (Worcester, Lincoln and South Holland).
- Since July 2022, the number of claimants in the Midlands Engine area has increased by 11,600 (+4.4% compared to an increase of 2.7% for the UK). Within the Midlands Engine, 46 local authorities increased, 1 remained the same (North East Lincolnshire) and 18 decreased.
- Since March 2020, the number of claimants in the Midlands Engine area has increased by 55,215 (+24.9% compared to +23.3% for the UK). Notably, East Lindsey, North East Lincolnshire, North Lincolnshire and West Lindsey all had lower levels of claimants than March 2020 (-1,155, -345, -140 and -55 respectively).
- Overall, for the Midlands Engine area the number of claimants as percentage of residents aged 16 years and over was 3.3% compared to 2.9% for the UK in July 2023.

Ward Analysis – Claimants Aged 16 Years and Over

- Out of the 1,511 wards within the Midlands Engine, 436 were at or above the UK average of 2.9% for the number of claimants as a percentage of the population aged 16 years and over in July 2023.
- The wards with the highest number of claimants as a percentage of the population were based in Birmingham, with Lozells the highest at 15.8%. This was followed by Handsworth at 15.6% and then Birchfield at 15.3%.
- In contrast, the lowest proportions were in Keele (Newcastle-Under-Lyme) with 0.1%, Ashby Castle (North West Leicestershire) with 0.2% and Horton (Staffordshire Moorlands) with 0.3%.

¹ Office for National Statistics (ONS)/Department for Work and Pensions (DWP): Claimant Count – released August 2023

The following map shows claimants as a percentage of residents aged 16 years and over in July 2023 across the Midlands Engine:



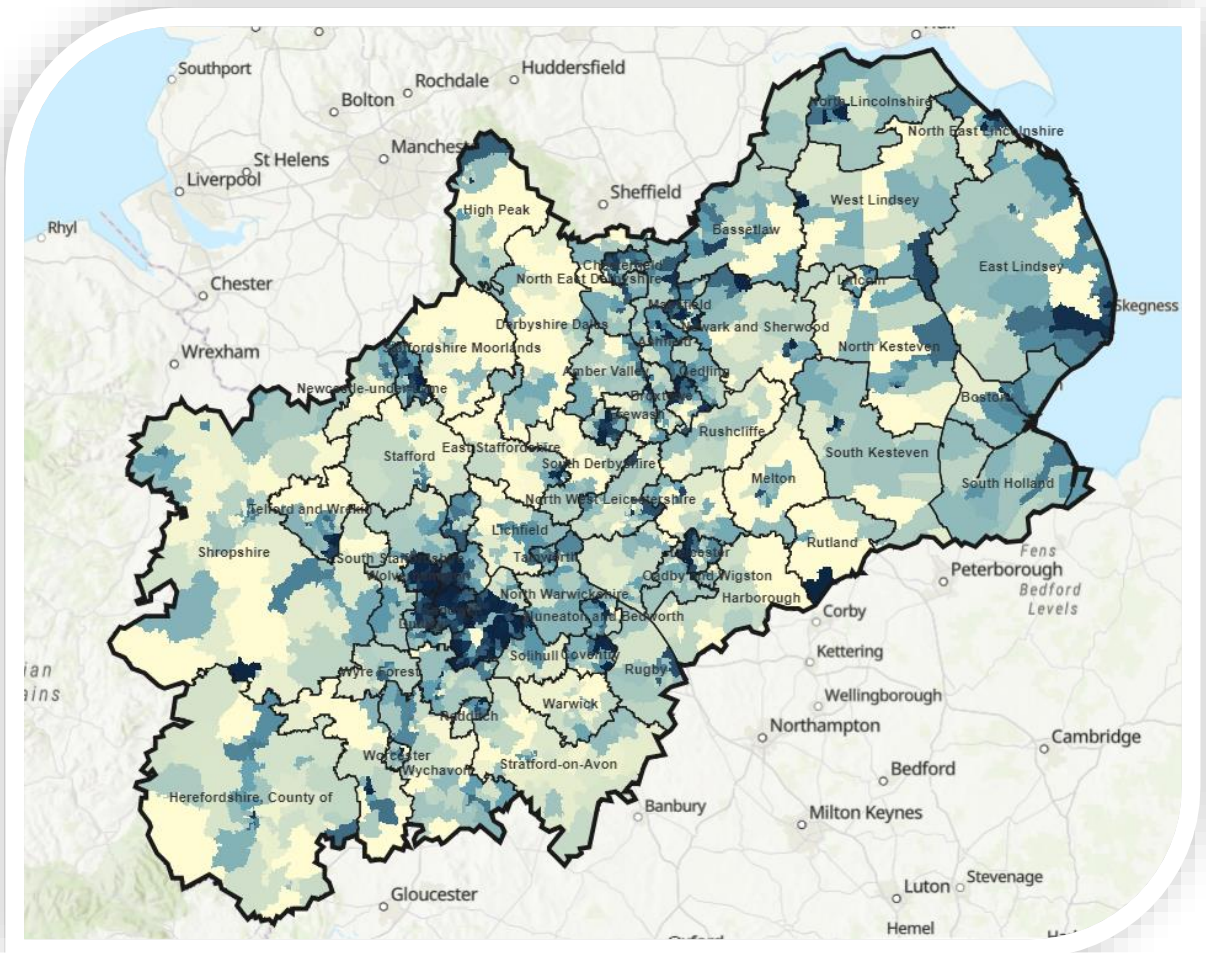
Youth Claimants (Aged 16–24 Years Old)

- There were 51,645 youth claimants (16–24 years old) in the Midlands Engine area in July 2023, an increase of 1,155 youth claimants since the previous month. This equates to an increase of 2.3% with the UK increasing by 2.2%.
- The latest monthly change shows that within the Midlands Engine, 49 local authorities increased, 5 remained the same level and 11 decreased.
- Since July 2022, the number of youth claimants has increased by 5,725 (+12.5% compared to +9.3% for the UK). Within the Midlands Engine, 56 local authorities increased, 2 remained the same (Lichfield and Wyre Forest) and 7 decreased (Telford & Wrekin, Wyre Forest, Solihull, Harborough, Stafford, Malvern Hills and Wychavon).
- Since March 2020, the number of youth claimants has increased by 7,450 (+16.9% compared to +12.4% for the UK). Notably, 12 local authorities are lower and 1 (Wyre Forest) was the same as March 2020 levels.
- Overall, for the Midlands Engine area the number of youth claimants as percentage of residents aged 16 – 24 years old was 4.6% compared to 3.8% for the UK in July 2023.

Ward Analysis – Youth Claimants

- Out of the 1,511 wards within the Midlands Engine, 636 were at or above the UK average of 3.8% for the number of claimants as a percentage of the population aged 16–24 years and over in July 2023.
- The ward with the highest number of claimants as a percentage of the population was Portland (Mansfield) at 18.7%. This was followed by Handsworth (Birmingham) at 15.0% and Newgate (Mansfield) at 14.1%.
- In contrast, within the Midlands Engine there were 105 wards with no youth claimants in July 2023.

The following map shows claimants as a percentage of residents aged 16 – 24 years old in July 2023 across the Midlands Engine:



Ward claimant rate per population for 16-24

