

Midlands Engine Claimant Count – September 2023 Release¹

Key Points:

- There were 272,815 claimants aged 16 years and over in the Midlands Engine area in August 2023, a decrease of 515 claimants since the previous month. This equates to a decrease of 0.2% for the Midlands Engine area, while the UK increased by 0.2%. Since March 2020, the number of claimants in the Midlands Engine area has increased by 51,275 (+23.1% compared to +22.0% for the UK).
- Overall, for the Midlands Engine area the number of claimants as percentage of residents aged 16 years and over was 3.2% compared to 2.8% for the UK in August 2023.
- There were 52,145 youth claimants (16–24 years old) in the Midlands Engine area in August 2023, an increase of 910 youth claimants since the previous month. This equates to an increase of 1.8% with the UK increasing by 1.9%. Since March 2020, the number of youth claimants in the Midlands Engine area has increased by 7,950 (+18.0% compared to +13.7% for the UK).
- Overall, for the Midlands Engine area the number of youth claimants as percentage of residents aged 16 – 24 years old was 4.6% compared to 3.9% for the UK in August 2023.

In Detail:

Claimants Aged 16 Years and Over

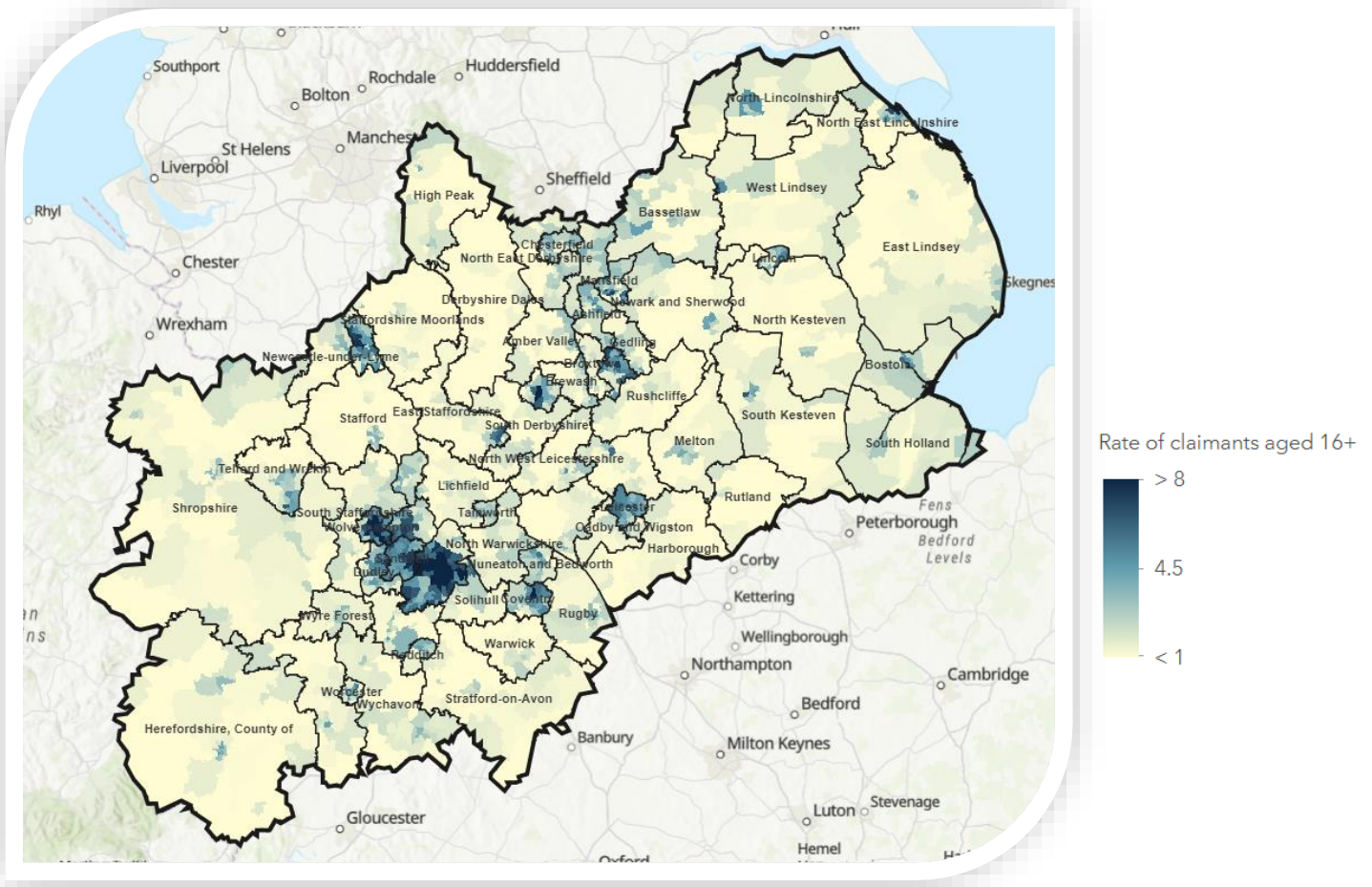
- There were 272,815 claimants aged 16 years and over in the Midlands Engine area in August 2023, a decrease of 515 claimants since the previous month. This equates to a decrease of 0.2% for the Midlands Engine area, while the UK increased by 0.2%.
- The latest monthly change shows across the Midlands Engine geography that 39 local authorities decreased, 24 increased and 2 remained at the same level (Worcester and Ashfield).
- Since August 2022, the number of claimants in the Midlands Engine area has increased by 7,900 (+3.0% compared to an increase of 1.9% for the UK). Within the Midlands Engine, 37 local authorities increased, 1 remained the same (Amber Valley) and 27 decreased.
- Since March 2020, the number of claimants in the Midlands Engine area has increased by 51,275 (+23.1% compared to +22.0% for the UK). Notably, East Lindsey, North East Lincolnshire, North Lincolnshire and West Lindsey all have lower levels of claimants now than in March 2020 (-1,185, -430, -165 and -60 respectively).
- Overall, for the Midlands Engine area the number of claimants as percentage of residents aged 16 years and over was 3.2% compared to 2.8% for the UK in August 2023.

Ward Analysis – Claimants Aged 16 Years and Over

- Out of the 1,511 wards within the Midlands Engine, 448 were at or above the UK average of 2.8% for the number of claimants as a percentage of the population aged 16 years and over in August 2023.
- The wards with the highest number of claimants as a percentage of the population were based in Birmingham, with Handsworth the highest at 16.2%. This was followed by Lozells at 15.7% and then Birchfield at 15.2%.
- In contrast, the lowest proportions were in Keele (Newcastle-Under-Lyme) with 0.1%, Ashby Castle (North West Leicestershire) with 0.2% and Horton (Staffordshire Moorlands) with 0.3%.

¹ Office for National Statistics (ONS)/Department for Work and Pensions (DWP): Claimant Count – released September 2023

The following map shows claimants as a percentage of residents aged 16 years and over in August 2023 across the Midlands Engine:



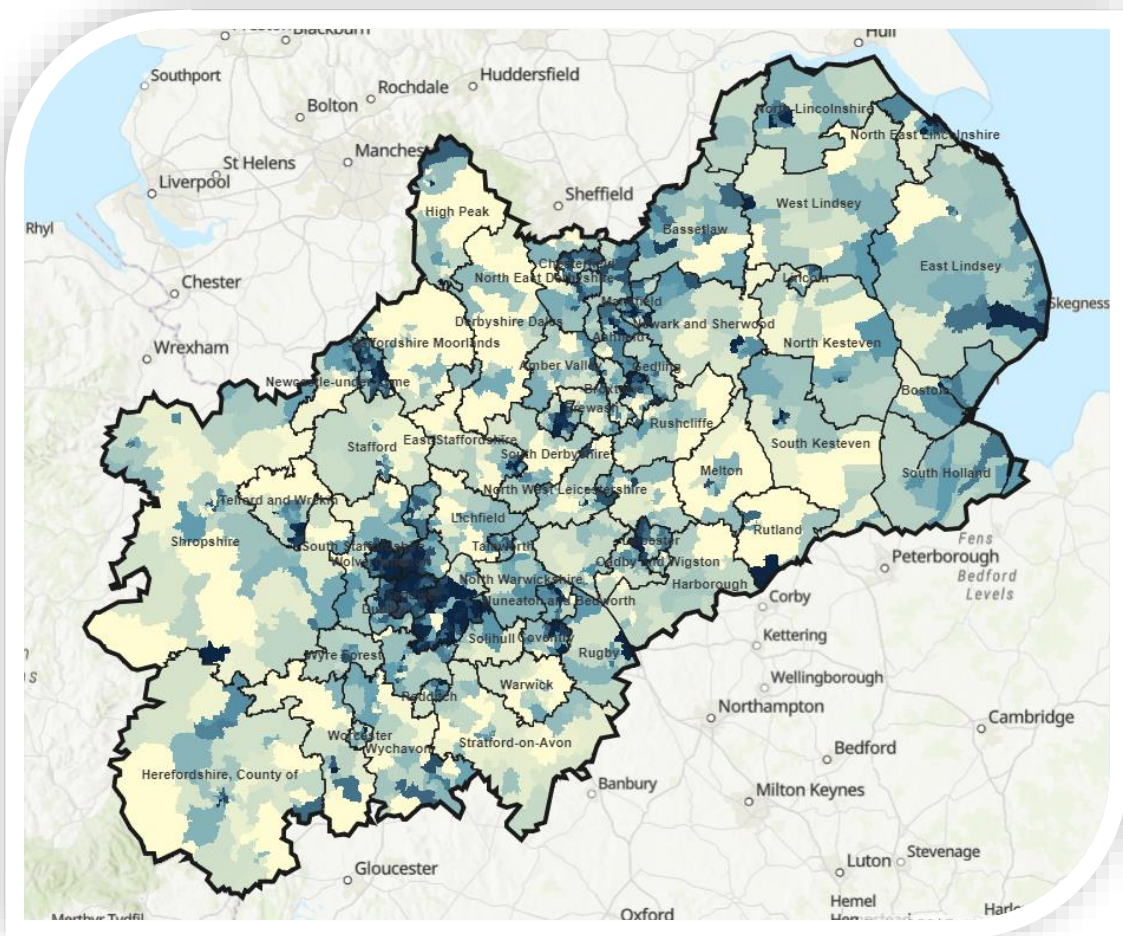
Youth Claimants (Aged 16–24 Years Old)

- There were 52,145 youth claimants (16–24 years old) in the Midlands Engine area in August 2023, an increase of 910 youth claimants since the previous month. This equates to an increase of 1.8% with the UK increasing by 1.9%.
- The latest monthly change shows that within the Midlands Engine, 39 local authorities increased, 10 remained the same level and 16 decreased.
- Since August 2022, the number of youth claimants has increased by 5,045 (+10.7% compared to +8.0% for the UK). Within the Midlands Engine, 58 local authorities increased, 1 remained the same (Stratford-on-Avon) and 6 decreased.
- Since March 2020, the number of youth claimants has increased by 7,950 (+18.0% compared to +13.7% for the UK). Notably, 12 local authorities are lower and 1 (Malvern Hills) was the same as March 2020 levels.
- Overall, for the Midlands Engine area the number of youth claimants as percentage of residents aged 16 – 24 years old was 4.6% compared to 3.9% for the UK in August 2023.

Ward Analysis – Youth Claimants

- Out of the 1,511 wards within the Midlands Engine, 616 were at or above the UK average of 3.9% for the number of claimants as a percentage of the population aged 16–24 years and over in August 2023.
- The ward with the highest number of claimants as a percentage of the population was Portland (Mansfield) at 16.8%. This was followed by Handsworth (Birmingham) at 15.9% and Joiner’s Square (Stoke-on-Trent) at 14.9%.
- In contrast, within the Midlands Engine there were 109 wards with no youth claimants in August 2023.

The following map shows claimants as a percentage of residents aged 16–24 years old in August 2023 across the Midlands Engine:



Ward claimant rate per population for 16-24



Rate of claimants aged 16-24 of population

