

Midlands Engine Claimant Count – November 2023 Release¹

For an interactive version click [here](#).

Key Points:

- There were 270,825 claimants aged 16 years and over in the Midlands Engine area in October 2023, an increase of 2,490 claimants since the previous month. This equates to an increase of 0.9% for the Midlands Engine area, while the UK increased by 1.1%. Since March 2020, the number of claimants in the Midlands Engine area has increased by 49,285 (+22.2% compared to +21.4% for the UK).
- Overall, for the Midlands Engine area the number of claimants as percentage of residents aged 16 years and over was 3.2% compared to 2.8% for the UK in October 2023.
- There were 52,630 youth claimants (16–24 years old) in the Midlands Engine area in October 2023, an increase of 680 youth claimants since the previous month. This equates to an increase of 1.3% with the UK increasing by 1.9%. Since March 2020, the number of youth claimants has increased by 8,435 (+19.1% compared to +14.7% for the UK).
- Overall, for the Midlands Engine area the number of youth claimants as percentage of residents aged 16 – 24 years old was 4.6% compared to 3.9% for the UK in October 2023.

In Detail:

Claimants Aged 16 Years and Over

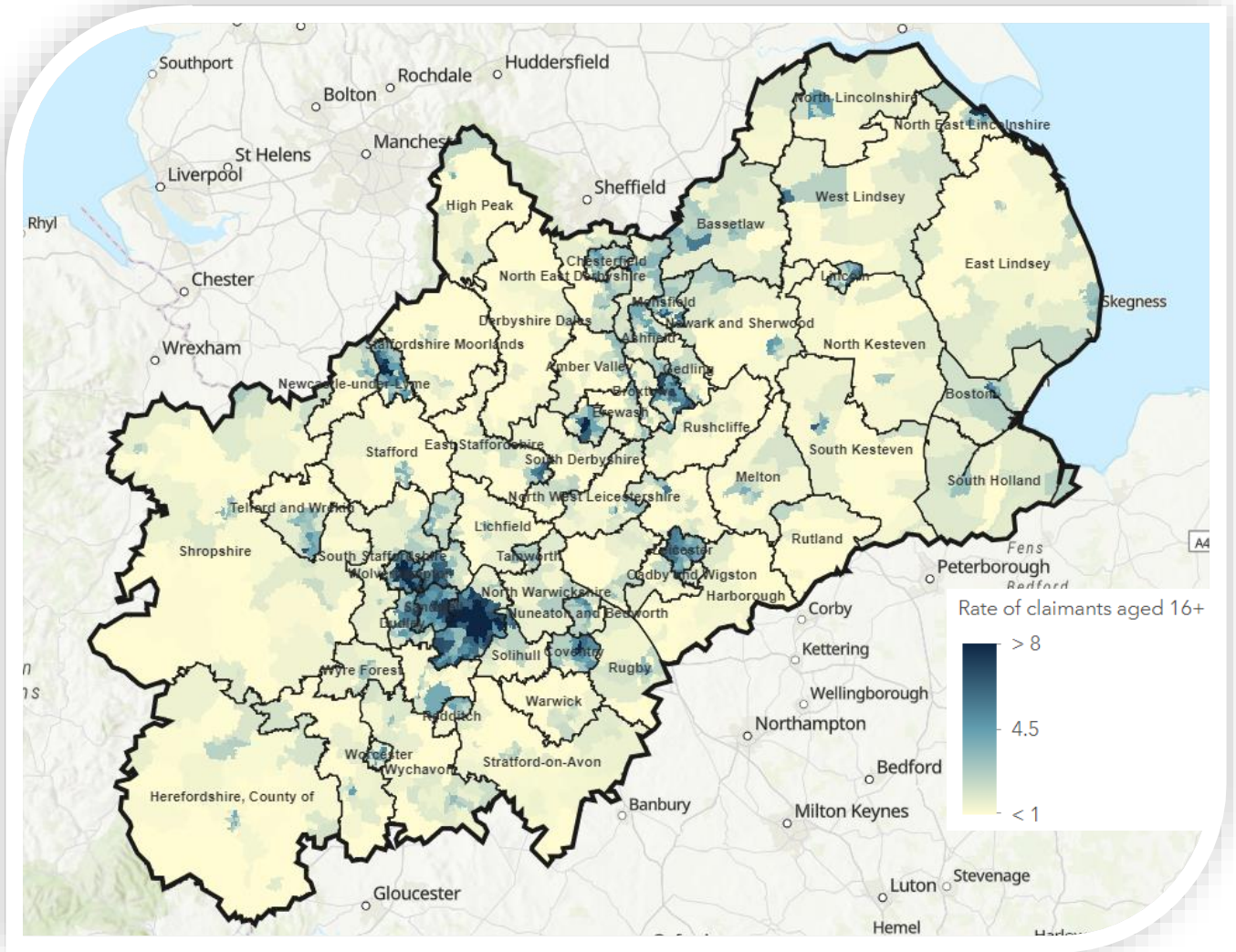
- There were 270,825 claimants aged 16 years and over in the Midlands Engine area in October 2023, an increase of 2,490 claimants since the previous month. This equates to an increase of 0.9% for the Midlands Engine area, while the UK increased by 1.1%.
- The latest monthly change shows that, across the Midlands Engine geography, 16 local authorities decreased, 46 increased and 3 (Amber Valley, High Peak and Oadby & Wigston) remained at the same level.
- Since October 2022, the number of claimants in the Midlands Engine area has increased by 11,305 (+4.4% compared to an increase of 3.4% for the UK). Within the Midlands Engine, 48 local authorities increased and 17 decreased.
- Since March 2020, the number of claimants in the Midlands Engine area has increased by 49,285 (+22.2% compared to +21.4% for the UK). East Lindsey, North East Lincolnshire, North Lincolnshire and West Lindsey all have lower levels of claimants now than in March 2020 (-1,100, -380, -265 and -50 respectively).
- Overall, for the Midlands Engine area the number of claimants as percentage of residents aged 16 years and over was 3.2% compared to 2.8% for the UK in October 2023.

Ward Analysis – Claimants Aged 16 Years and Over

- Out of the 1,511 wards within the Midlands Engine, 451 were at or above the UK average of 2.8% for the number of claimants as a percentage of the population aged 16 years and over in October 2023.
- The wards with the highest number of claimants as a percentage of the population were based in Birmingham, with Handsworth the highest at 16.0%. This was followed by Lozells at 15.7% and then Aston at 14.9%.
- In contrast, the lowest proportions were in Keele (Newcastle-Under-Lyme) with 0.1% and Ashby Castle (North West Leicestershire) with 0.2%.

¹ Office for National Statistics (ONS)/Department for Work and Pensions (DWP): Claimant Count – released November 2023

The following map shows claimants as a percentage of residents aged 16 years and over in October 2023 across the Midlands Engine:



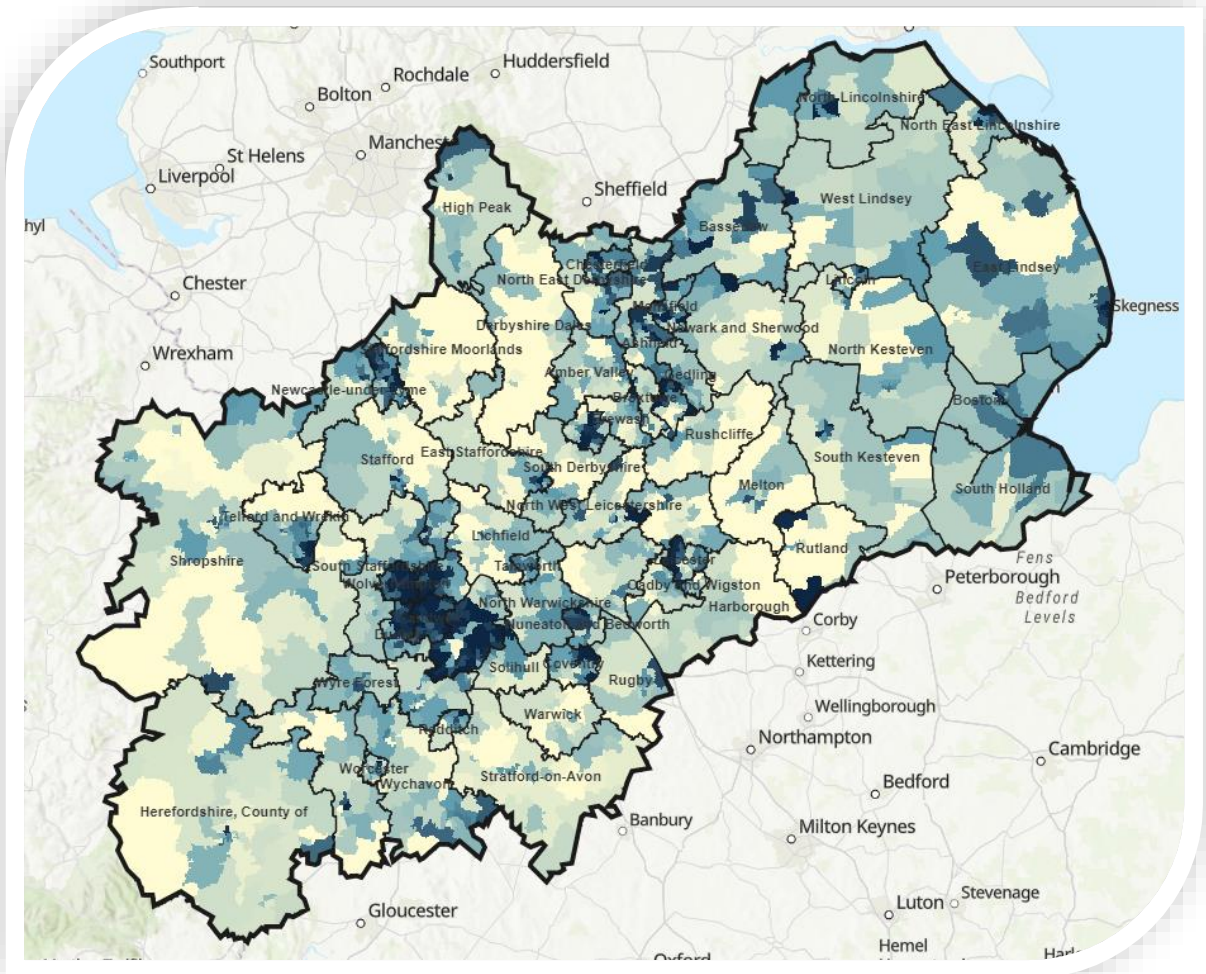
Youth Claimants (Aged 16–24 Years Old)

- There were 52,630 youth claimants (16–24 years old) in the Midlands Engine area in October 2023, an increase of 680 youth claimants since the previous month. This equates to an increase of 1.3% with the UK increasing by 1.9%.
- The latest monthly change shows that within the Midlands Engine, 42 local authorities increased, 15 decreased and 8 remained at the same levels.
- Since October 2022, the number of youth claimants has increased by 5,320 (+11.2% compared to +8.3% for the UK). Within the Midlands Engine, 60 local authorities increased, 3 decreased (Malvern Hills, Wyre Forest and Erewash) and 2 remained the same levels (Stratford-on-Avon and Wychavon).
- Since March 2020, the number of youth claimants has increased by 8,435 (+19.1% compared to +14.7% for the UK). There are 12 local authorities that were lower than March 2020 levels.
- Overall, for the Midlands Engine area the number of youth claimants as percentage of residents aged 16 – 24 years old was 4.6% compared to 3.9% for the UK in October 2023.

Ward Analysis – Youth Claimants

- Out of the 1,511 wards within the Midlands Engine, 638 were at or above the UK average of 3.9% for the number of claimants as a percentage of the population aged 16–24 years and over in October 2023.
- The ward with the highest number of claimants as a percentage of the population was Handsworth (Birmingham) at 15.9%. This was followed by Portland (Mansfield) at 14.9% and East Park (Wolverhampton) at 13.5%.
- In contrast, within the Midlands Engine there were 92 wards with no youth claimants in October 2023.

The following map shows claimants as a percentage of residents aged 16–24 years old in October 2023 across the Midlands Engine:



Ward claimant rate per population for 16-24

