

Midlands Engine Claimant Count – February 2024 Release¹

Key Points:

- There were 274,555 claimants aged 16 years and over in the Midlands Engine area in January 2024, an increase of 5,095 claimants since the previous month. This equates to an increase of 1.9% for the Midlands Engine area, while the UK increased by 1.7%.
- Overall, for the Midlands Engine area the number of claimants as percentage of residents aged 16 years and over was 3.3% compared to 2.9% for the UK in January 2024.
- There were 53,240 youth claimants (16–24 years old) in the Midlands Engine area in January 2024, an increase of 650 youth claimants since the previous month. This equates to an increase of 1.2% for the Midlands Engine area, while the UK increased by 1.0%.
- Overall, for the Midlands Engine area the number of youth claimants as percentage of residents aged 16 – 24 years old was 4.7% compared to 4.0% for the UK in January 2024.

In Detail:

Claimants Aged 16 Years and Over

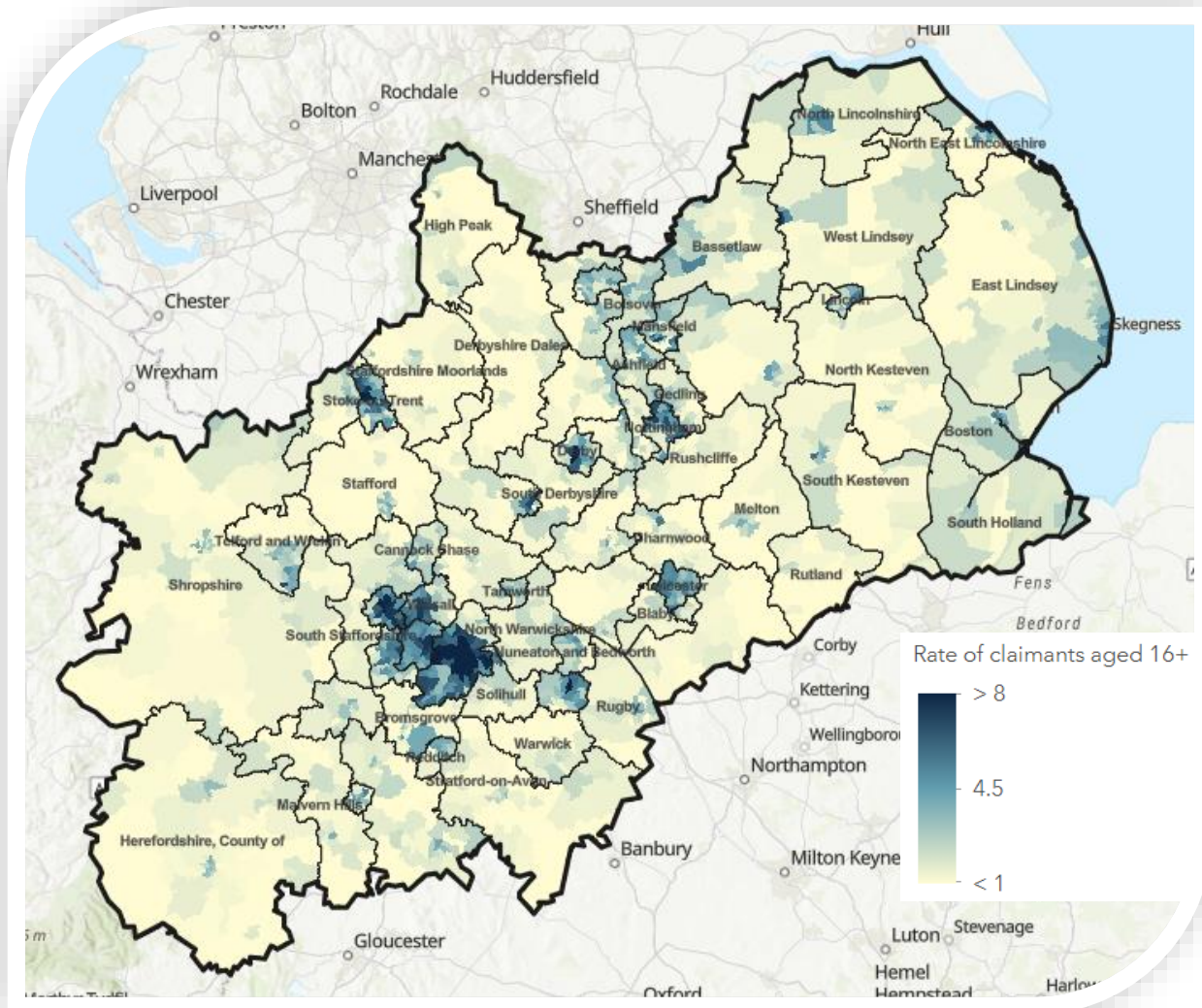
- There were 274,555 claimants aged 16 years and over in the Midlands Engine area in January 2024, an increase of 5,095 claimants since the previous month. This equates to an increase of 1.9% for the Midlands Engine area, while the UK increased by 1.7%.
- The latest monthly change shows that, across the Midlands Engine geography, 10 local authorities decreased, 52 increased and 3 (Lichfield, Tamworth and Oadby & Wigston) remained at the same level.
- Since January 2023, the number of claimants in the Midlands Engine area has increased by 10,465 (+4.0% compared to an increase of 4.5% for the UK). Within the Midlands Engine, 45 local authorities increased, 2 remained the same (North Warwickshire and High Peak) and 18 decreased.
- Since March 2020, the number of claimants in the Midlands Engine area has increased by 53,015 (+23.9% compared to +23.8% for the UK). East Lindsey and North East Lincolnshire have lower levels of claimants now than in March 2020 (-450, -210 respectively).
- Overall, for the Midlands Engine area the number of claimants as percentage of residents aged 16 years and over was 3.3% compared to 2.9% for the UK in January 2024.

Ward Analysis – Claimants Aged 16 Years and Over

- Out of the 1,511 wards within the Midlands Engine, 440 were at or above the UK average of 2.9% for the number of claimants as a percentage of the population aged 16 years and over in January 2024.
- The wards with the highest number of claimants as a percentage of the population were based in Birmingham, with Lozells and Handsworth joint highest at 16.2%. This was followed by Aston at 15.2% and then Birchfield at 14.9%. In contrast, the lowest proportion was in Keele (Newcastle-Under-Lyme) at 0.2%.

¹ Office for National Statistics (ONS)/Department for Work and Pensions (DWP): Claimant Count – released February 2024

The following map shows claimants as a percentage of residents aged 16 years and over in January 2024 across the Midlands Engine:



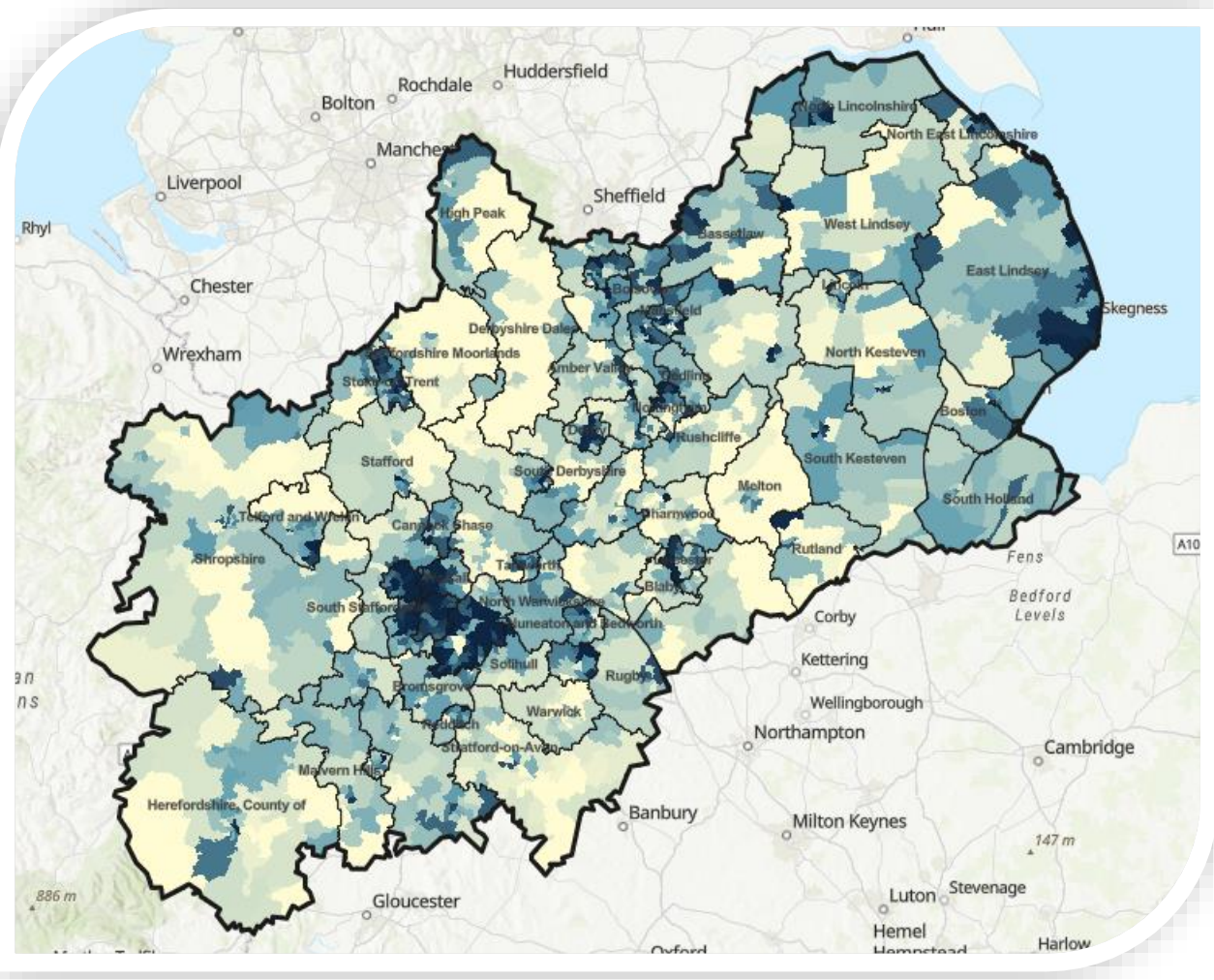
Youth Claimants (Aged 16–24 Years Old)

- There were 53,240 youth claimants (16–24 years old) in the Midlands Engine area in January 2024, an increase of 650 youth claimants since the previous month. This equates to an increase of 1.2% for the Midlands Engine area, while the UK increased by 1.0%.
- The latest monthly change shows that within the Midlands Engine, 43 local authorities increased, 13 decreased and 9 remained at the same levels.
- Since January 2023, the number of youth claimants has increased by 4,850 (+10.0% compared to +8.4% for the UK). Within the Midlands Engine, 52 local authorities increased, 10 decreased and 3 remained the same levels (Shropshire, South Staffordshire and Telford & Wrekin).
- Since March 2020, the number of youth claimants has increased by 9,045 (+20.5% compared to 16.0% for the UK). There were 10 local authorities that were lower than March 2020 levels and a further 3 that were the same level (Staffordshire Moorlands, Derbyshire Dales and Hinckley & Bosworth).
- Overall, for the Midlands Engine area the number of youth claimants as percentage of residents aged 16 – 24 years old was 4.7% compared to 4.0% for the UK in January 2024.

Ward Analysis – Youth Claimants

- Out of the 1,511 wards within the Midlands Engine, 615 were at or above the UK average of 4.0% for the number of claimants as a percentage of the population aged 16–24 years and over in January 2024.
- The ward with the highest number of claimants as a percentage of the population was Portland (Mansfield) at 16.8%. This was followed by Handsworth (Birmingham) at 16.7% and Joiner’s Square (Stoke-on-Trent) at 14.9%. In contrast, within the Midlands Engine there were 101 wards with no youth claimants in January 2024.

The following map shows claimants as a percentage of residents aged 16–24 years old in January 2024 across the Midlands Engine:



Ward claimant rate per population for 16-24

