

Midlands Engine Claimant Count – July 2024 Release¹

Key Points:

- There were 297,485 claimants aged 16 years and over in the Midlands Engine area in June 2024, an increase of 15,075 claimants since the previous month. This equates to an increase of 5.3% for the Midlands Engine area, while the UK increased by 3.7%.
- Overall, for the Midlands Engine area the number of claimants as percentage of residents aged 16 years and over was 3.5% compared to 3.0% for the UK in June 2024.
- There were 54,050 youth claimants (16–24 years old) in the Midlands Engine area in June 2024, an increase of 420 youth claimants since the previous month. This equates to an increase of 0.8% for the Midlands Engine area, while the UK increased by 0.6%.
- Overall, for the Midlands Engine area the number of youth claimants as percentage of residents aged 16 – 24 years old was 4.8% compared to 4.0% for the UK in June 2024.

In Detail:

Claimants Aged 16 Years and Over

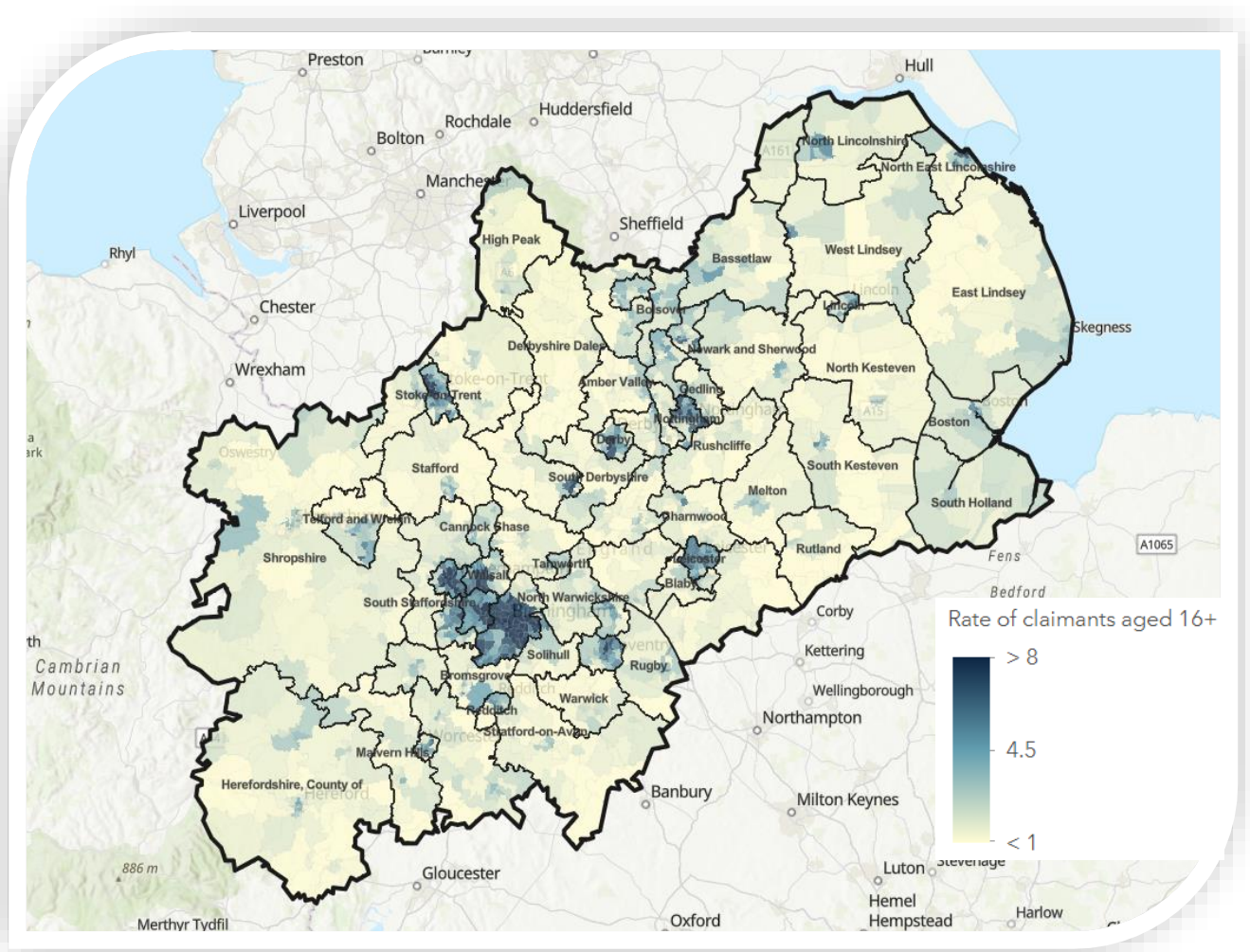
- There were 297,485 claimants aged 16 years and over in the Midlands Engine area in June 2024, an increase of 15,075 claimants since the previous month. This equates to an increase of 5.3% for the Midlands Engine area, while the UK increased by 3.7%.
- The latest monthly change shows across the Midlands Engine geography, 54 local authorities increased, 1 remained the same (Bassetlaw) and 10 decreased in the number of claimants aged 16 and over.
- Since June 2023, the number of claimants in the Midlands Engine area has increased by 25,400 (+9.3% compared to an increase of 8.3% for the UK). Within the Midlands Engine, 54 local authorities increased, 1 remained the same (Newcastle-under-Lyme) and 10 decreased.
- Since March 2020, the number of claimants in the Midlands Engine area has increased by 75,945 (+34.3% compared to +31.2% for the UK). East Lindsey and North East Lincolnshire have lower levels of claimants now than in March 2020 (-970 and -150 respectively).
- Overall, for the Midlands Engine area the number of claimants as percentage of residents aged 16 years and over was 3.5% compared to 3.0% for the UK in June 2024.

Ward Analysis – Claimants Aged 16 Years and Over

- Out of the 1,511 wards within the Midlands Engine, 429 were at or above the UK average of 3.0% for the number of claimants as a percentage of the population aged 16 years and over in June 2024.
- The wards with the highest number of claimants as a percentage of the population were based in Birmingham, with Lozells and Handsworth highest at 18.9% and 18.4% respectively, this was followed by Aston at 17.9%. In contrast, the wards with the lowest number of claimants as a percentage of the population were Keele (Newcastle-Under-Lyme) at 0.1%, followed by Ashby Castle (North West Leicestershire) at 0.2%.

¹ Office for National Statistics (ONS)/Department for Work and Pensions (DWP): Claimant Count – released July 2024

The following map shows claimants as a percentage of residents aged 16 years and over in June 2024 across the Midlands Engine:



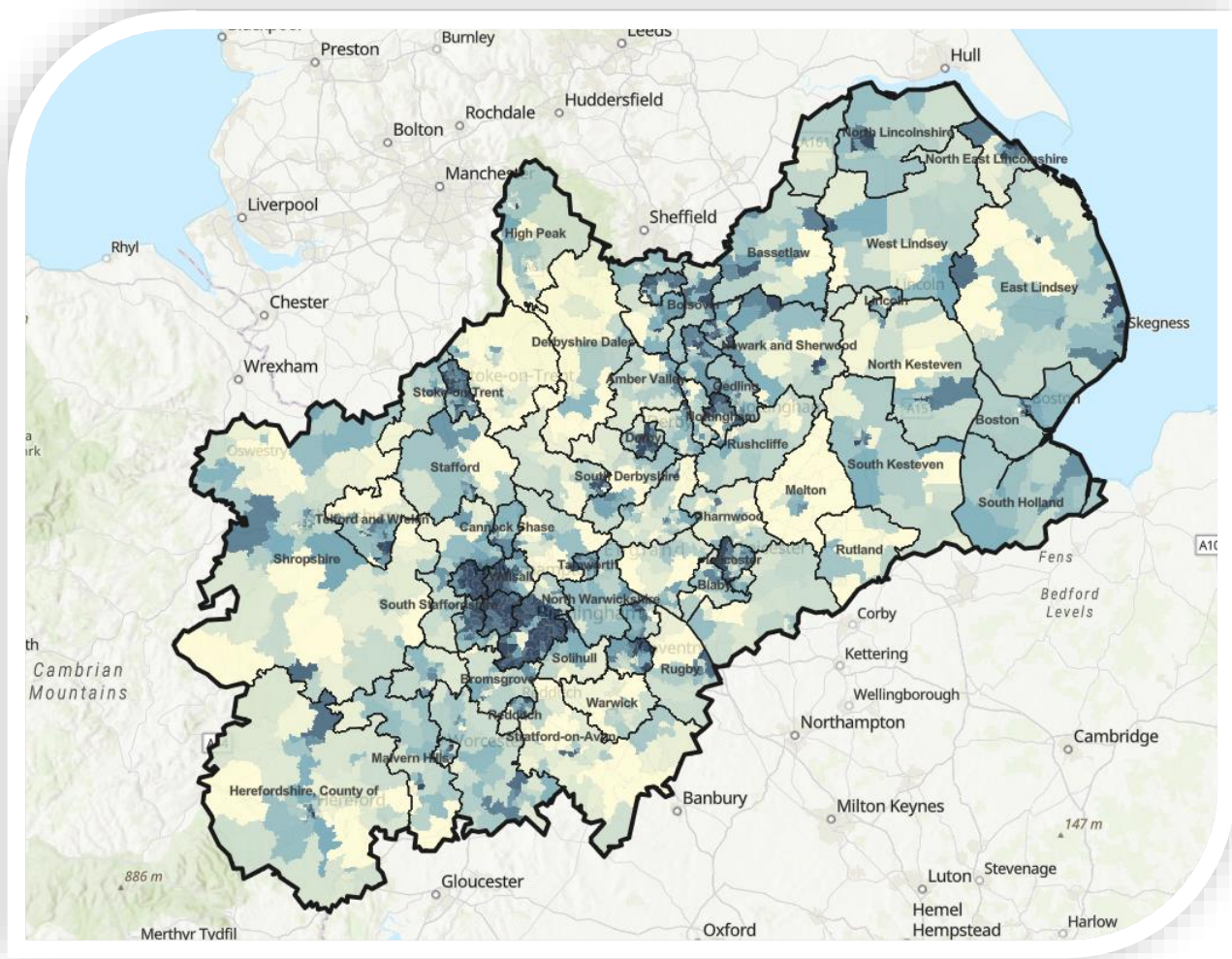
Youth Claimants (Aged 16–24 Years Old)

- There were 54,050 youth claimants (16–24 years old) in the Midlands Engine area in June 2024, an increase of 420 youth claimants since the previous month. This equates to an increase of 0.8% for the Midlands Engine area, while the UK increased by 0.6%.
- The latest monthly change shows that within the Midlands Engine area, 30 local authorities increased, 23 decreased and 12 remained at the same levels.
- Since June 2023, the number of youth claimants has increased by 3,560 (+7.1% compared to +5.7% for the UK). Within the Midlands Engine, 45 local authorities increased, 18 decreased and 2 remained the same (Hinckley & Bosworth and Dudley).
- Since March 2020, the number of youth claimants has increased by 9,855 (+22.3% compared to +16.3% for the UK). There were 12 local authorities that were lower than March 2020 levels, 1 that remained the same level (Wyre Forest) and 52 that were higher.
- Overall, for the Midlands Engine area the number of youth claimants as percentage of residents aged 16 – 24 years old was 4.8% compared to 4.0% for the UK in June 2024.

Ward Analysis – Youth Claimants

- Out of the 1,511 wards within the Midlands Engine, 606 were at or above the UK average of 4.0% for the number of claimants as a percentage of the population aged 16–24 years and over in June 2024.
- The ward with the highest number of youth claimants as a percentage of the population was Handsworth (Birmingham) at 18.4%, followed by Joiner’s Square (Stoke-on-Trent) at 15.5% and Stockland Green (Birmingham) at 14.6%. In contrast, within the Midlands Engine there were 97 wards with no youth claimants in June 2024.

The following map shows claimants as a percentage of residents aged 16–24 years old in June 2024 across the Midlands Engine:



Ward claimant rate per population for 16-24

