

## Midlands Engine Claimant Count – February 2025 Release<sup>1</sup>

### Key Points:

- There were 309,170 claimants aged 16 years and over in the Midlands Engine area in January 2025, an increase of 4,595 claimants since the previous month (+1.5%), while the UK increased by 1.7%.
- Overall, for the Midlands Engine area the number of claimants as percentage of residents aged 16 years and over was 3.7% compared to 3.2% for the UK in January 2025.
- There were 58,205 youth claimants in the Midlands Engine area in January 2025, an increase of 700 youth claimants since the previous month. This equates to an increase of 1.2% for the Midlands Engine area, while the UK increased by 1.4%.
- Overall, for the Midlands Engine area the number of youth claimants as percentage of residents aged 16 – 24 years old was 5.1% compared to 4.3% for the UK in January 2025.

### In Detail:

#### Claimants Aged 16 Years and Over

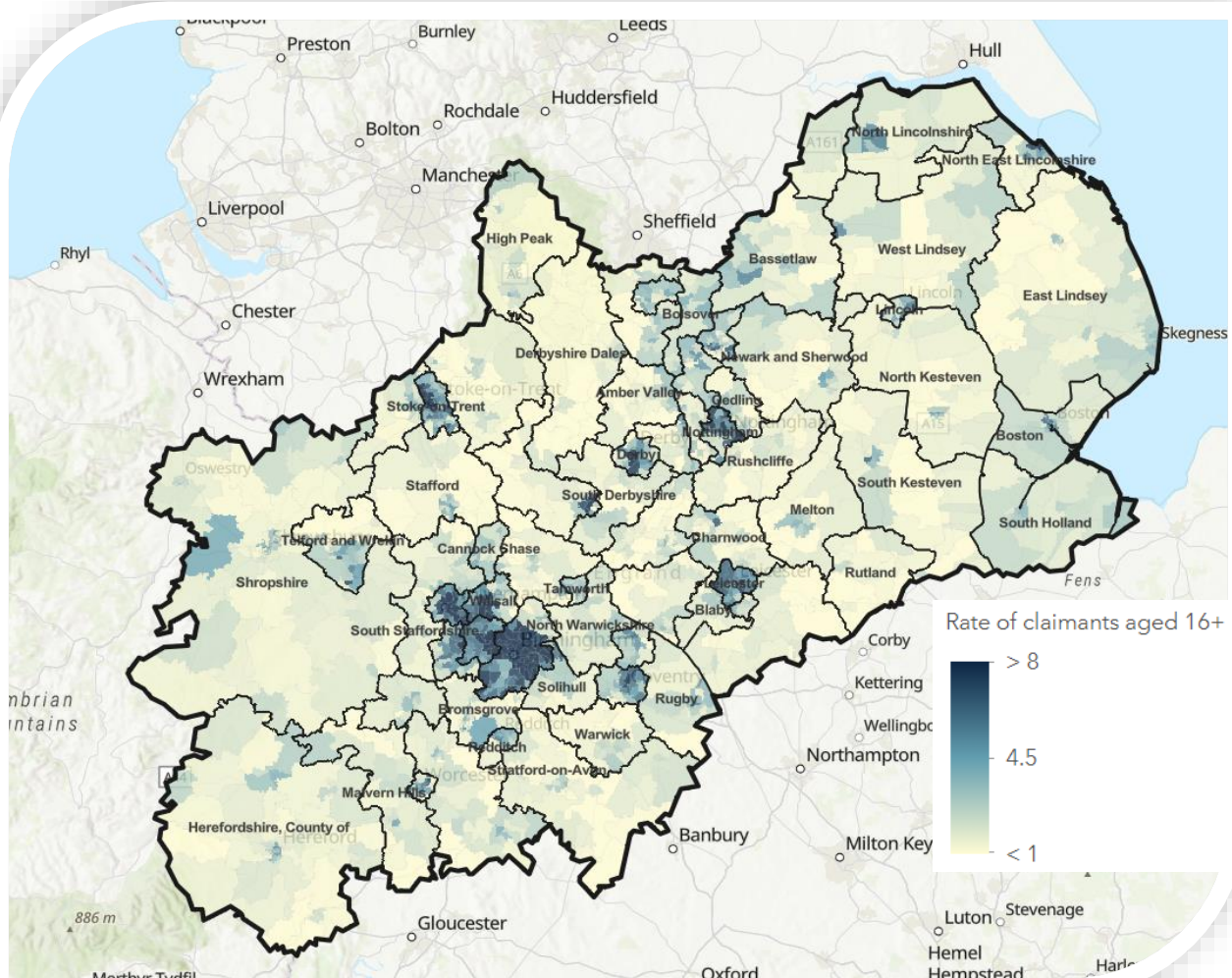
- There were 309,170 claimants aged 16 years and over in the Midlands Engine area in January 2025, an increase of 4,595 claimants since the previous month (+1.5%), while the UK increased by 1.7%. The latest monthly change shows across the Midlands Engine geography that 61 local authorities increased, 3 decreased and 1 remained the same (South Derbyshire).
- Since January 2024, the number of claimants in the Midlands Engine area has increased by 37,670 (+13.9% compared to an increase of 11.5% for the UK). Within the Midlands Engine geography 59 local authorities increased and 6 decreased.
- Since March 2020, the number of claimants in the Midlands Engine area has increased by 87,630 (+39.6% compared to +36.4% for the UK). East Lindsey (-390) and North East Lincolnshire (-240) had lower levels of claimants now than in March 2020, while West Lindsey remained at the same level.
- Overall, for the Midlands Engine area the number of claimants as percentage of residents aged 16 years and over was 3.7% compared to 3.2% for the UK in January 2025.

#### Ward Analysis – Claimants Aged 16 Years and Over

- Out of the 1,511 wards within the Midlands Engine, 412 were at or above the UK average of 3.2% for the number of claimants as a percentage of the population aged 16 years and over in January 2025.
- The wards with the highest number of claimants as a percentage of the population were based in Birmingham, with Lozells at 20.7%, Handsworth at 19.2% and Aston at 19.1%.
- In contrast, the wards with the lowest number of claimants as a percentage of the population were Keele (Newcastle-Under-Lyme) and Ashby Castle (North West Leicestershire) both at 0.2% and Lyddington (Rutland) and Maer & Whitmore (Newcastle-Under-Lyme) both at 0.4%.

<sup>1</sup> Source: Office for National Statistics (ONS) based off Department of Work and Pensions (DWP), Claimant Count, released February 2025. Please note, the previous month's figures have been revised.

The following map shows claimants as a percentage of residents aged 16 years and over in January 2025 across the Midlands Engine:



### Youth Claimants (Aged 16–24 Years Old)

- There were 58,205 youth claimants in the Midlands Engine area in January 2025, an increase of 700 youth claimants since the previous month. This equates to an increase of 1.2% for the Midlands Engine area, while the UK increased by 1.4%. The latest monthly change shows that within the Midlands Engine area, 45 local authorities increased, 14 decreased and 6 were unchanged.
- Since January 2024, the number of youth claimants has increased by 5,315 (+10.0% compared to +8.1% for the UK). Within the Midlands Engine, 55 local authorities increased, 9 decreased and 1 was unchanged (North East Derbyshire).
- Since March 2020, the number of youth claimants has increased by 14,010 (+31.7% compared to +24.5% for the UK). East Lindsey (-110) and West Lindsey (-5) had lower levels of claimants than in March 2020, while 62 local authorities increased and 1 remained unchanged (South Kesteven).
- Overall, for the Midlands Engine area the number of youth claimants as percentage of residents aged 16 – 24 years old was 5.1% compared to 4.3% for the UK in January 2025.

### Ward Analysis – Youth Claimants

- Out of the 1,511 wards within the Midlands Engine, 648 were at or above the UK average of 4.3% for the number of claimants as a percentage of the population aged 16–24 years and over in January 2025.
- The ward with the highest number of youth claimants as a percentage of the population was Handsworth (Birmingham) at 18.4%, followed by Birchfield (Birmingham) at 16.4% and Joiner’s Square (Stoke-on-Trent) at 15.5%.
- In contrast, within the Midlands Engine there were 87 wards with no youth claimants in January 2025.

The following map shows claimants as a percentage of residents aged 16–24 years old in January 2025 across the Midlands Engine:

